

PROVIDENCE, R.I.  
CITY ENGINEER'S OFFICE  
STREET LINE DEPT.

June 13, 1913

039432

# PLAT OF STOKES STREET

FROM WESTMINSTER ST. TO DIKE ST.

SCALE 40 FEET PER INCH.

DECLARED A PUBLIC HIGHWAY

BY RESOLUTION OF THE

BOARD OF ALDERMEN

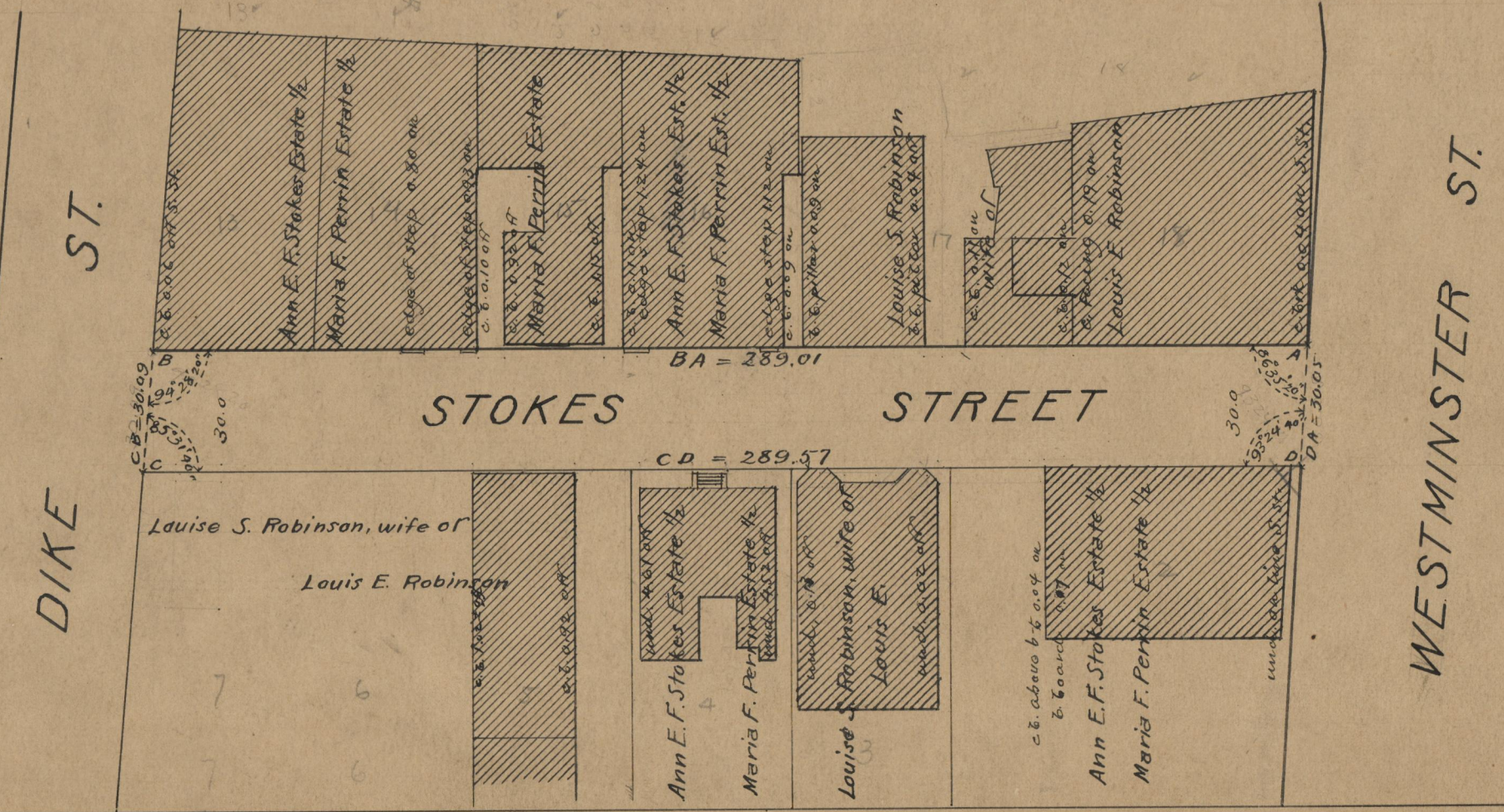
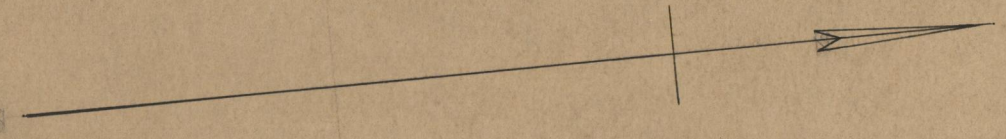
May 15, 1913.

289.01  
289.57  
289.29

Witness, -----

City Clerk.

Note, The area declared a public highway  
is indicated by the letters ABCD.  
The lines thus fixed conform to the  
deeds recorded in Deed Book 525,  
pages 166 and 168, in the office of  
the Recorder of Deeds.



OFFICE No. 19075  
DRAWER " 71  
SHEET " B-80