

PROVIDENCE, R.I.
CITY ENGINEER'S OFFICE
STREET LINE DEPT.

May 22, 1913.

039386

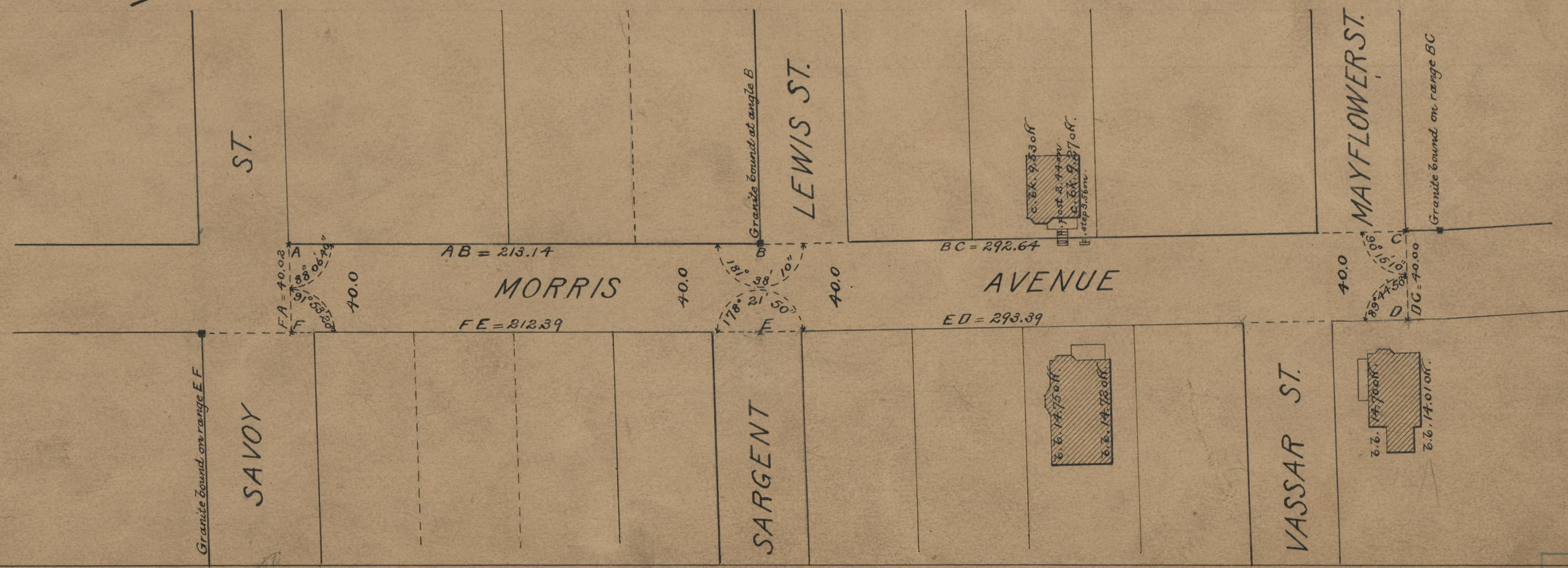
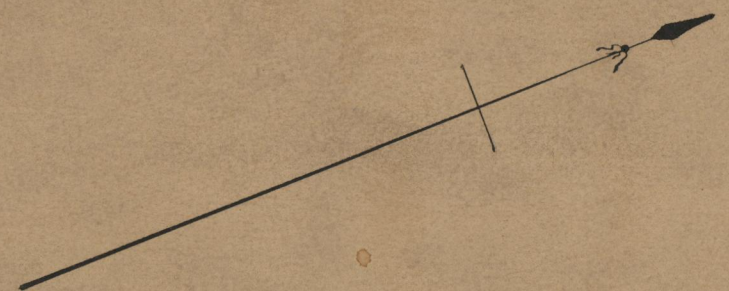
Aug. 7, 1913.

PLAT OF MORRIS AVENUE

FROM SAVOY ST. TO A POINT
ABOUT 250 FEET NORTH OF LEWIS ST.
SCALE 50 FEET PER INCH.

213.14
292.64
293.39
212.39

27011.56
505.78



OFFICE No. 19072
DRAWER " 71
SHEET " B-79