

470 - 330  
583 - 376 - 408

E.S.M. XXXIII-42

PROVIDENCE, R.I.  
CITY ENGINEER'S OFFICE  
STREET LINE DEPT.

May 5, 1913

039353

Note, The area declared a public highway is indicated by the letters A B C D.

The lines thus fixed conform to the deeds recorded in Deed Books 470, pages 486-7, 473, page 330, and 503, pages 376 and 408, in the office of the Recorder of Deeds.

# PLAT OF DANA STREET

FROM HOPE ST. WESTERLY TO  
WITHIN 100 FEET FROM IVY ST.  
SCALE 50 FEET PER INCH.

DECLARED A PUBLIC HIGHWAY  
BY RESOLUTION OF THE  
BOARD OF ALDERMEN

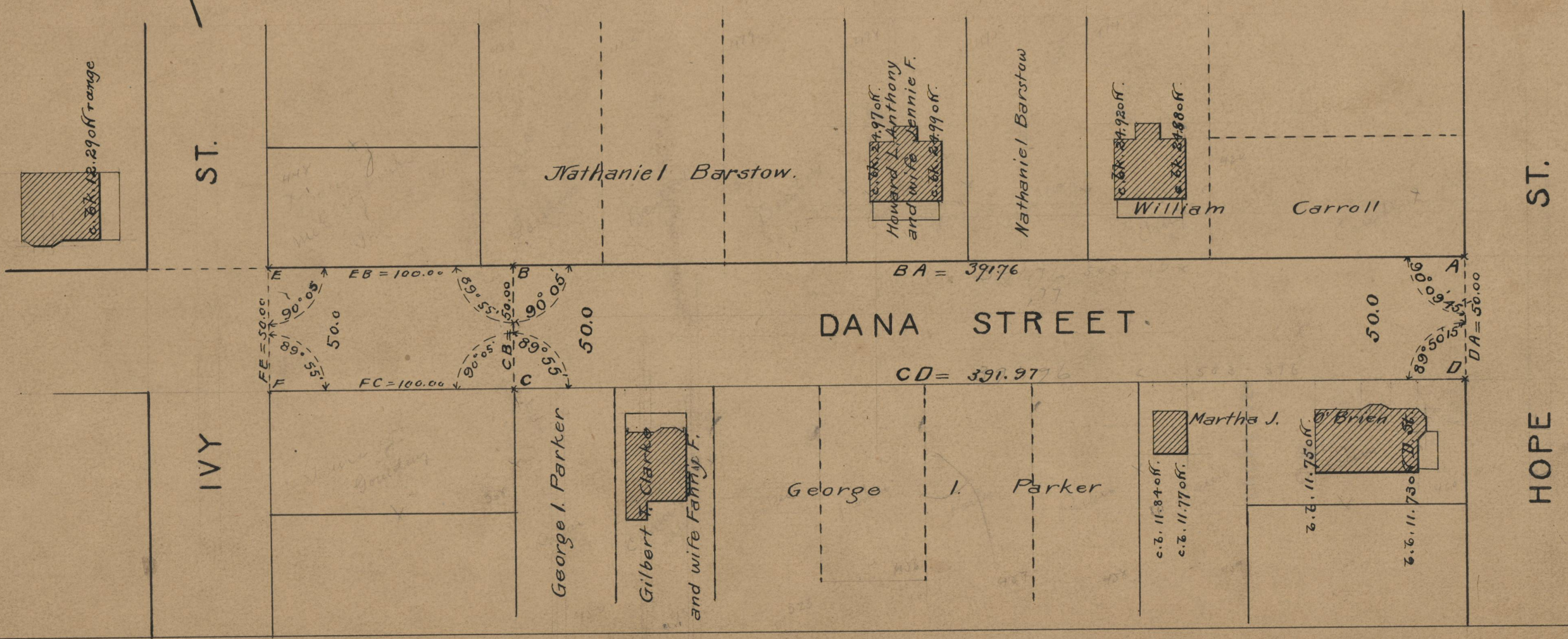
March 20, 1913.

391.76  
391.97  
2783.73  
391.863

Witness,

City Clerk.

The area indicated by the letters BCEF is to be laid out under the usual form and a plat has been made for the report of the committee to lay out the same.



71  
B-77

71  
B-77

OFFICE No. 19068  
DRAWER 71  
SHEET B-77