

039357
May 8

E.S.M. Cal. B'h 570-64
H.E.S. Cal. B'h 538-166

PROVIDENCE, R.I.
CITY ENGINEER'S OFFICE
STREET LINE DEPT.

May 8, 1913

039357

PLAT OF LORING AVENUE

FROM PRESIDENT AVE. TO IRVING AVE.

SCALE 50 FEET PER INCH.

DECLARED A PUBLIC HIGHWAY
BY RESOLUTION OF THE
BOARD OF ALDERMEN

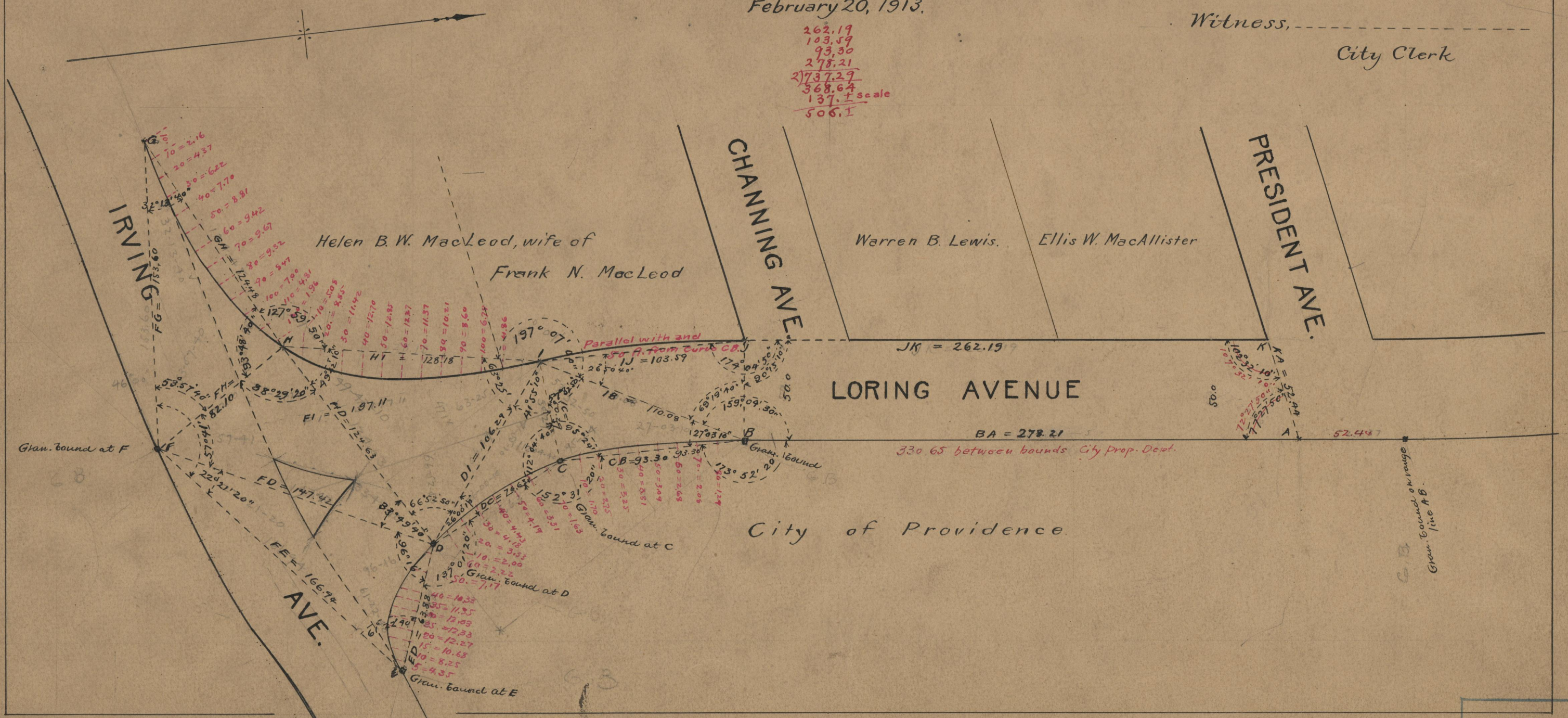
February 20, 1913.

Witness, -----

City Clerk

262.19
103.59
93.30
278.21
278.21
568.64
137.1 scale
506.1

Note, The area declared a public highway is indicated by the letters ABCDEGHIJK, the curved lines being defined by ordinates as noted. These lines agree with the deeds recorded in Deed Book 528, pages 416-8, in the office of the Recorder of Deeds.



LORING AVENUE

Warren B. Lewis. Ellis W. MacAllister

Helen B. W. MacLeod, wife of
Frank N. MacLeod

CHANNING AVE.

PRESIDENT AVE.

IRVING AVE.

AVE.

City of Providence.

OFFICE No.	19067
DRAWN	71
SHEET	B-76