

PROVIDENCE, R.I.
CITY ENGINEER'S OFFICE

STREET LINE DEPT.

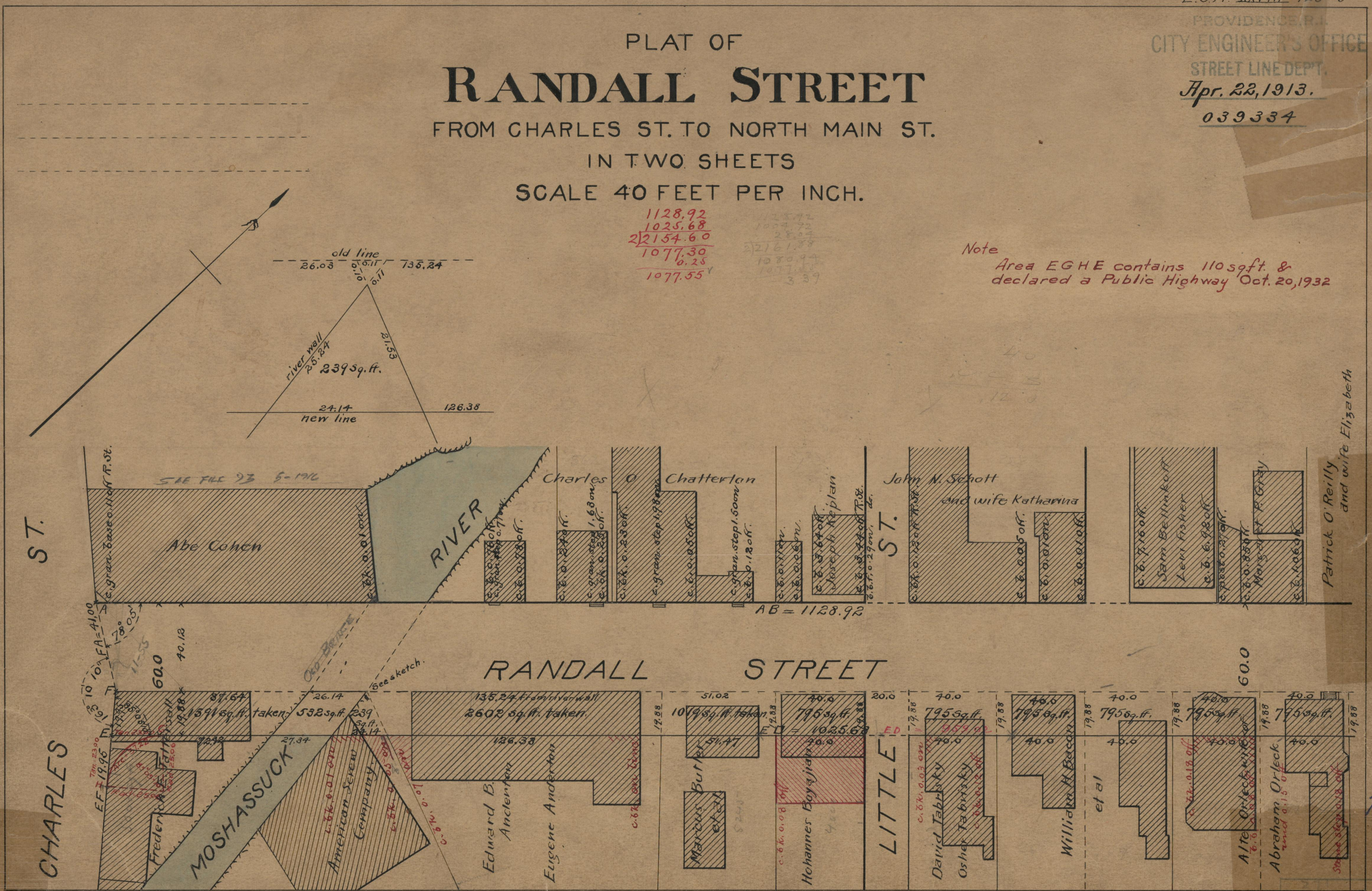
Apr. 22, 1913.

039334

PLAT OF
RANDALL STREET
FROM CHARLES ST. TO NORTH MAIN ST.
IN TWO SHEETS
SCALE 40 FEET PER INCH.

1128.92
1025.68
2154.60
1077.30
0.25
1077.55

Note
Area EGHE contains 110 sqft. &
declared a Public Highway Oct. 20, 1932



CHARLES ST.

LITTLE ST.

Patrick O'Reilly
and wife Elizabeth

71
B-74

71
B-74

OFFICE No. 10
DRAWER