

PROVIDENCE, R.I.
CITY ENGINEER'S OFFICE
STREET LINE DEPT.
Jan. 17, 1913

039164

Note, The area declared a public highway
is indicated by the letters A B C D.

The lines thus fixed conform to the deeds
in Deed book 373, page 465, and Deed Book
528, page 423, in the office of the Recorder
of Deeds.

PLAT OF KENWOOD STREET

FROM MESSER ST TO WAVERLY ST.

SCALE 50 FEET PER INCH

DECLARED A PUBLIC HIGHWAY

BY RESOLUTION OF THE

BOARD OF ALDERMEN

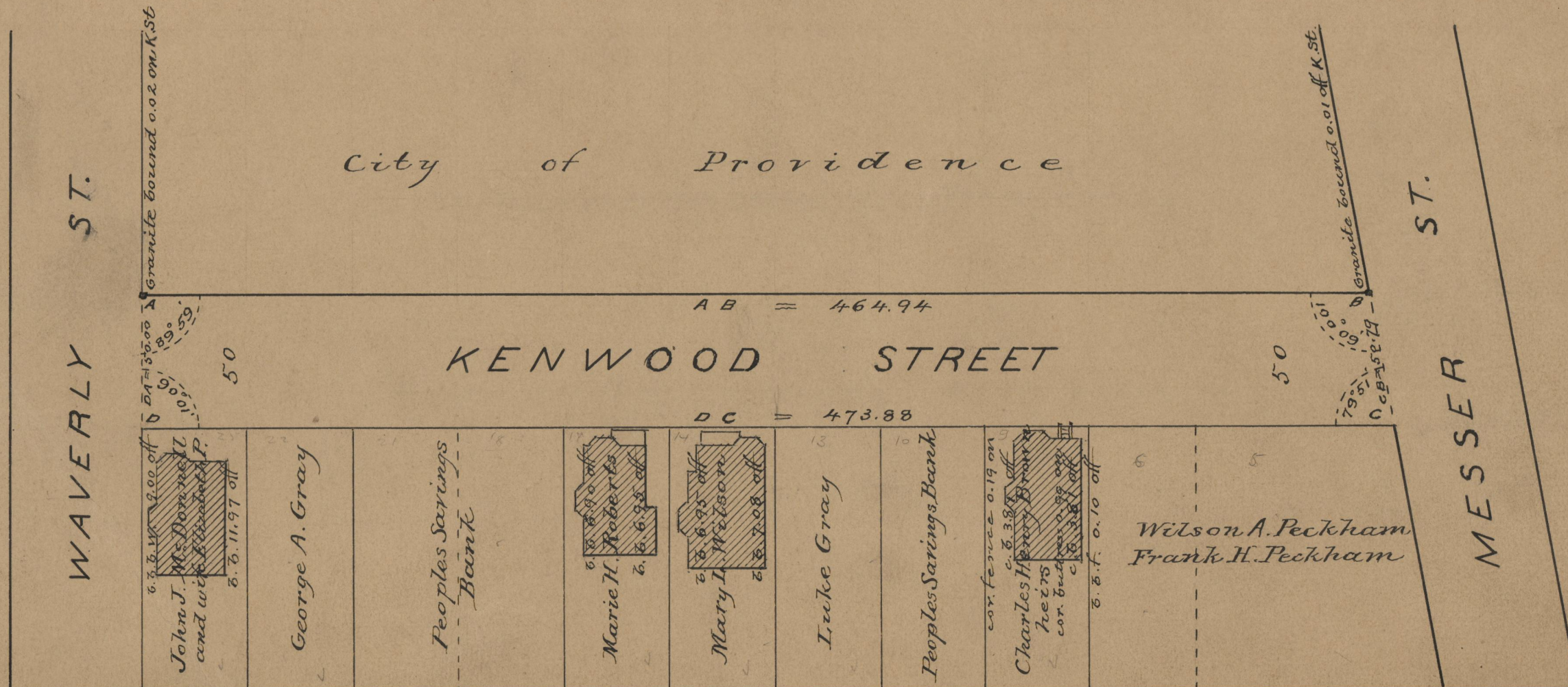
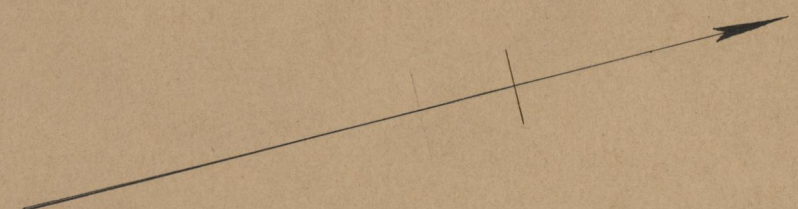
December 31, 1912.

(BY REASON OF TWENTY YEARS USE)

764.94
473.88
2) 1238.82
469.41

Witness, -----

City Clerk.



| | |
|------------|-------|
| OFFICE No. | 18964 |
| DRAWER | 71 |
| SHEET | B-73 |