

PROVIDENCE, R.I.
CITY ENGINEER'S OFFICE

STREET LINE DEPT.

Dec. 27, 1912.

039125

Note; The area declared a public highway
is indicated by the letters ABCD.
These lines conform to the deeds in
Deed Book 373, page 322, in the office
of the Recorder of Deeds.

PLAT OF SUMTER STREET

FROM MELROSE ST. TO HAMILTON ST.

SCALE 50 FEET PER INCH.

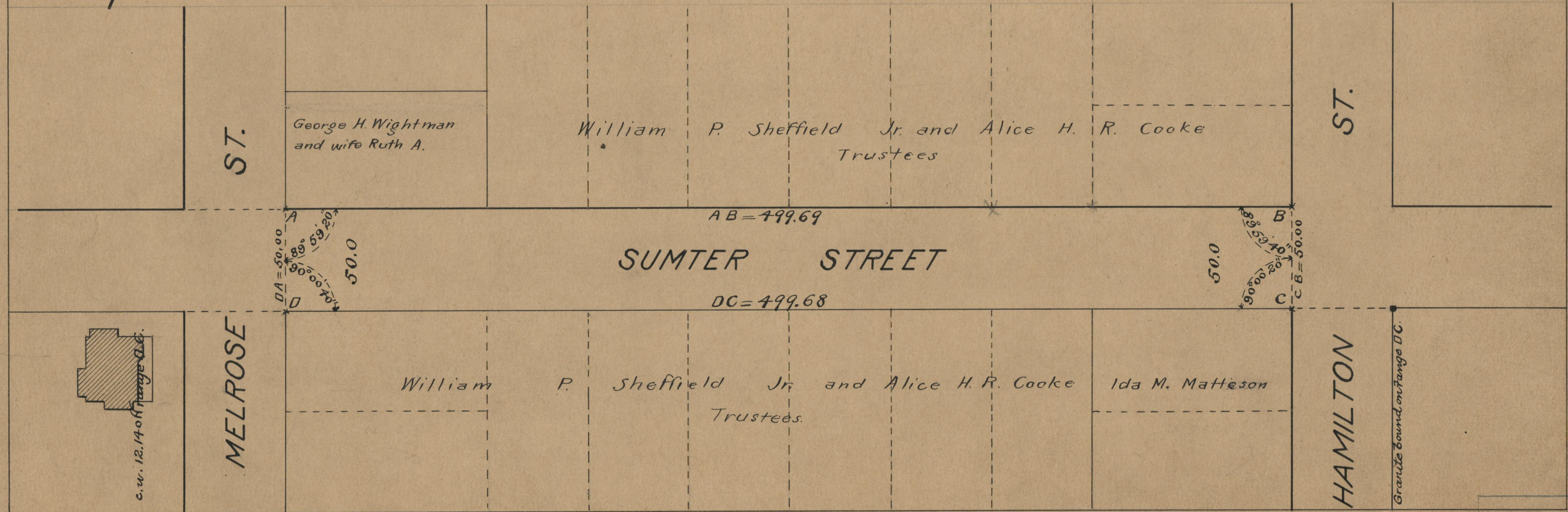
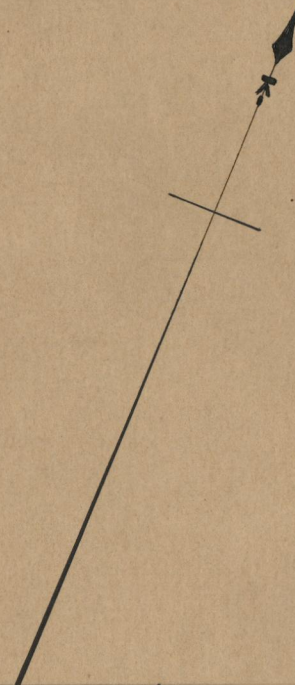
DECLARED A PUBLIC HIGHWAY

BY RESOLUTION OF THE

BOARD OF ALDERMEN

November 21, 1912.

499.68 V



OFFICE No. 18959
 DRAWER ,, 71
 SHEET ,, B-72