

PROVIDENCE, R.I.
CITY ENGINEER'S OFFICE
STREET LINE DEPT.
Dec. 27, 1912.
039121

Note, The area declared a public highway is indicated by the letters ABCD.

These lines conform to the deeds recorded in Deed books 211, page 442, 416, page 17, 507, page 355, 528, pages 132, 133, 137, 140, 146, 155, 223, 239, 391 and 392 in the office of the Recorder of Deeds.

PLAT OF
GALLATIN STREET

FROM NIAGARA ST. TO MELROSE ST.

IN TWO SHEETS

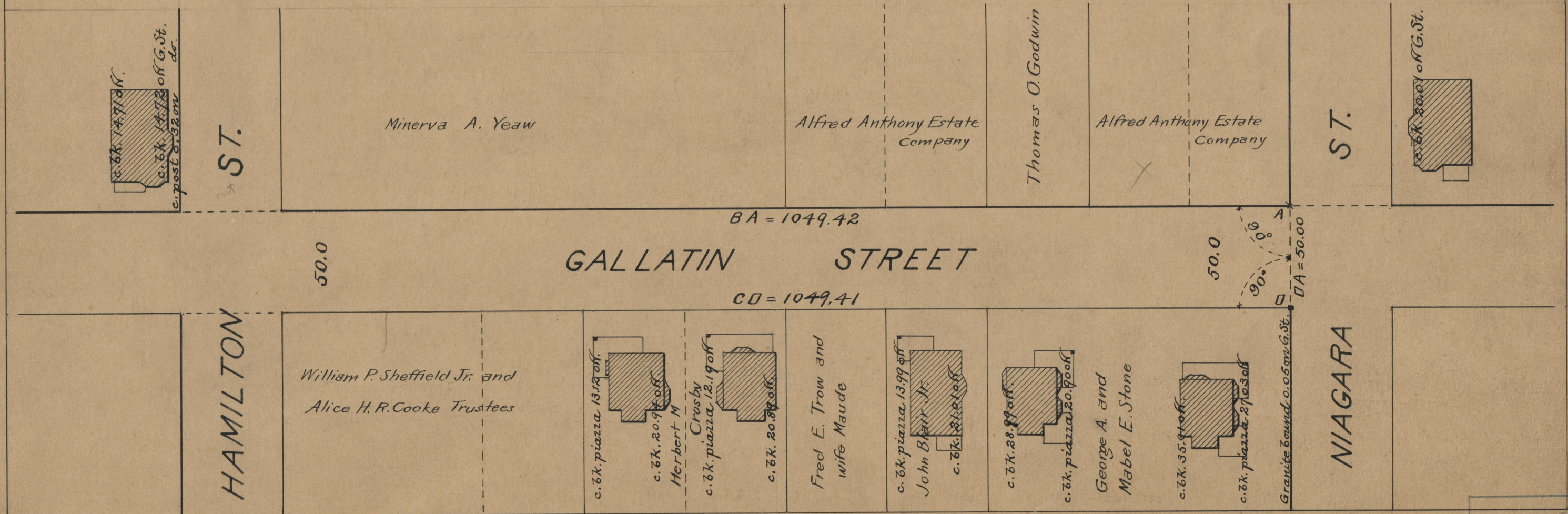
SCALE 50 FEET PER INCH.

DECLARED A PUBLIC HIGHWAY
BY RESOLUTION OF THE
BOARD OF ALDERMEN

November 21, 1912.

1049.42 ✓

999.42



OFFICE No. 18957
DRAWER " 71
SHEET " B-70