

PROVIDENCE, R.I.
CITY ENGINEER'S OFFICE
STREET LINE DEPT.
Nov. 30, 1912.
039076

Note: The area declared a public highway
is indicated by the letters ABGD.
The lines thus fixed correspond with
the deed recorded in Deed Book 528, page 234.

PLAT OF DOWNING STREET

FROM ADELAIDE AVE. TO RESERVOIR AVE.

SCALE 50 FEET PER INCH.

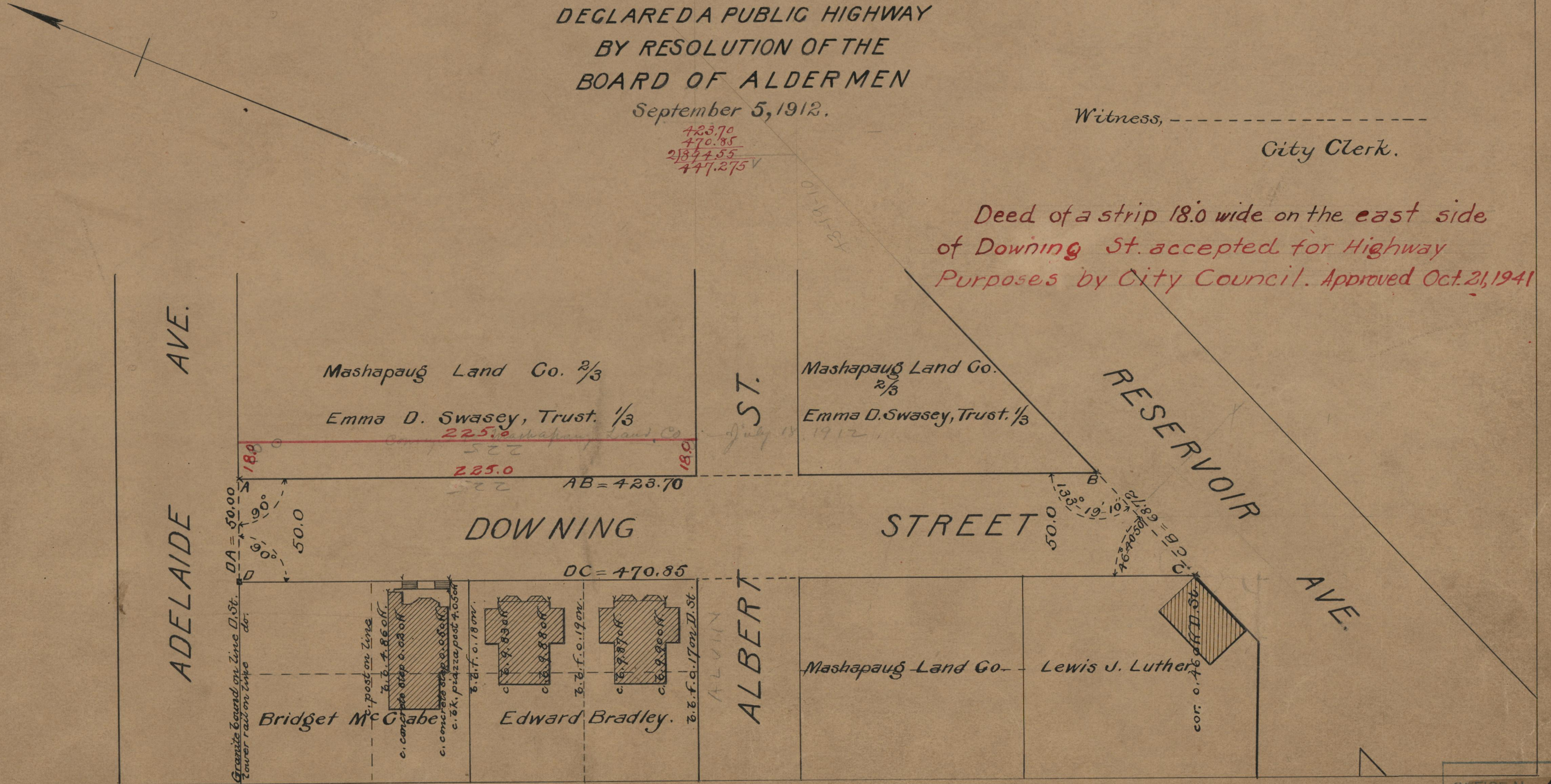
DECLARED A PUBLIC HIGHWAY
BY RESOLUTION OF THE
BOARD OF ALDERMEN

September 5, 1912.

Witness, -----
City Clerk.

423.70
470.85
218.9455
447.275V

Deed of a strip 18.0 wide on the east side
of Downing St. accepted for Highway
Purposes by City Council. Approved Oct. 21, 1941



OFFICE No. 18941
DRAWER, 71
SHEET, B-66