

# PLAT OF PLAINFIELD STREET

FROM OLNEYVILLE SQ. TO POCASSET AVE.

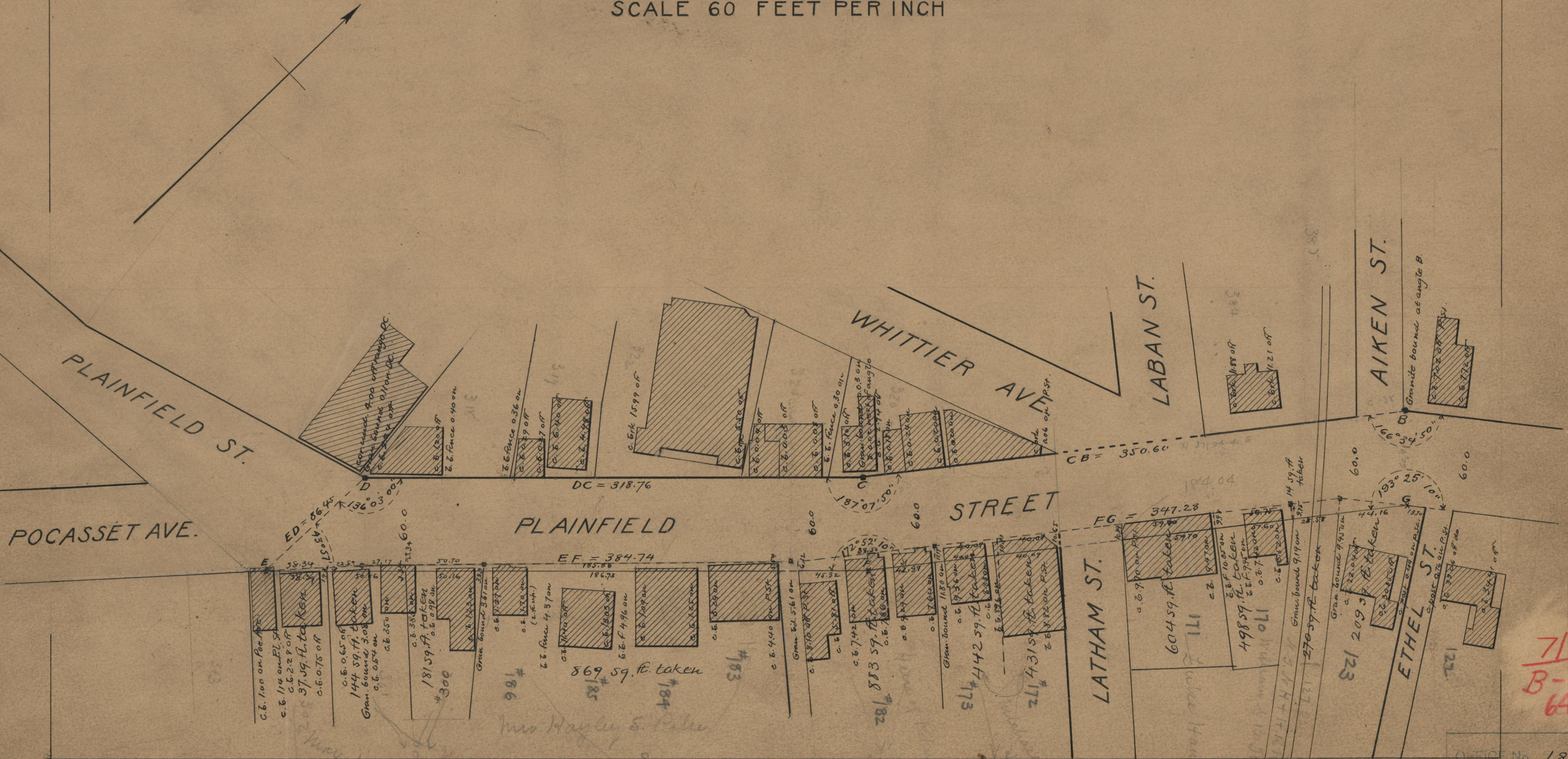
IN TWO SHEETS

SCALE 60 FEET PER INCH

PROVIDENCE, R.I.  
CITY ENGINEER'S OFFICE  
STREET LINE DEPT.

Oct. 25, 1912

038999



#302

May 1912  
James A. Caswell  
James of Holland  
Boston Mass

71  
B-1  
6A

OFFICE No. 1896  
DRAWER 7  
SHEET B-64