

PROVIDENCE, R.I.
CITY ENGINEER'S OFFICE
STREET LINE DEPT.
July 12, 1912

038793

PLAT OF UPTON AVENUE

FROM ELMGROVE AVE. TO COLE AVE.

SCALE 80 FEET PER INCH.

DECLARED A PUBLIC HIGHWAY

BY RESOLUTION OF THE

BOARD OF ALDERMEN

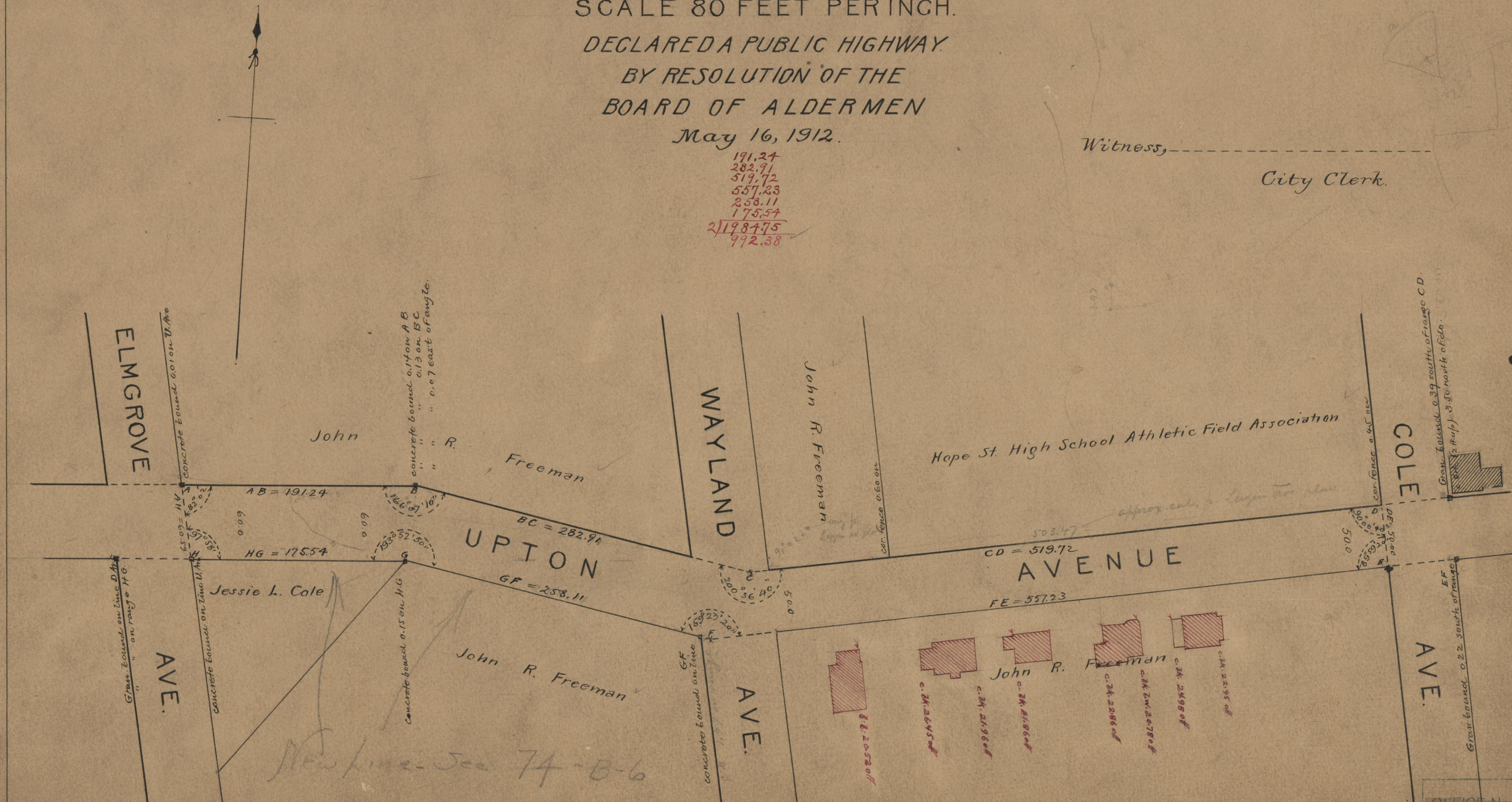
May 16, 1912.

Witness, _____
City Clerk.

191.24
282.91
519.72
557.23
258.11
175.54
2198.75
992.38

Note, The area declared a public highway is indicated by the letters A B C D E F G H.

The lines thus fixed correspond with the deeds recorded in Deed Books 410, page 147 and 512, pages 99 and 138, in the Office of the Recorder of Deeds.



OFFICE No. 18388
DRAWER, 71
SHEET 1355