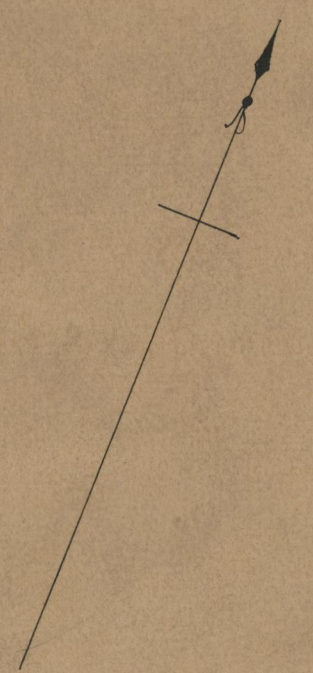


PROVIDENCE, R.I.  
CITY ENGINEER'S OFFICE  
STREET LINE DEPT.  
Aug. 28, 1912  
038907

PLAT OF  
**WATERMAN STREET**  
FROM CANAL ST. TO NORTH MAIN ST.  
SCALE 50 FEET PER INCH.

192.02	192.02	180.61
178.80	170.41	178.80
2370.82	2382.50	2135.74
185.41	171.25	174.70
	179.70	174.70
	370.95	174.70
	185.41	
	-185.54	

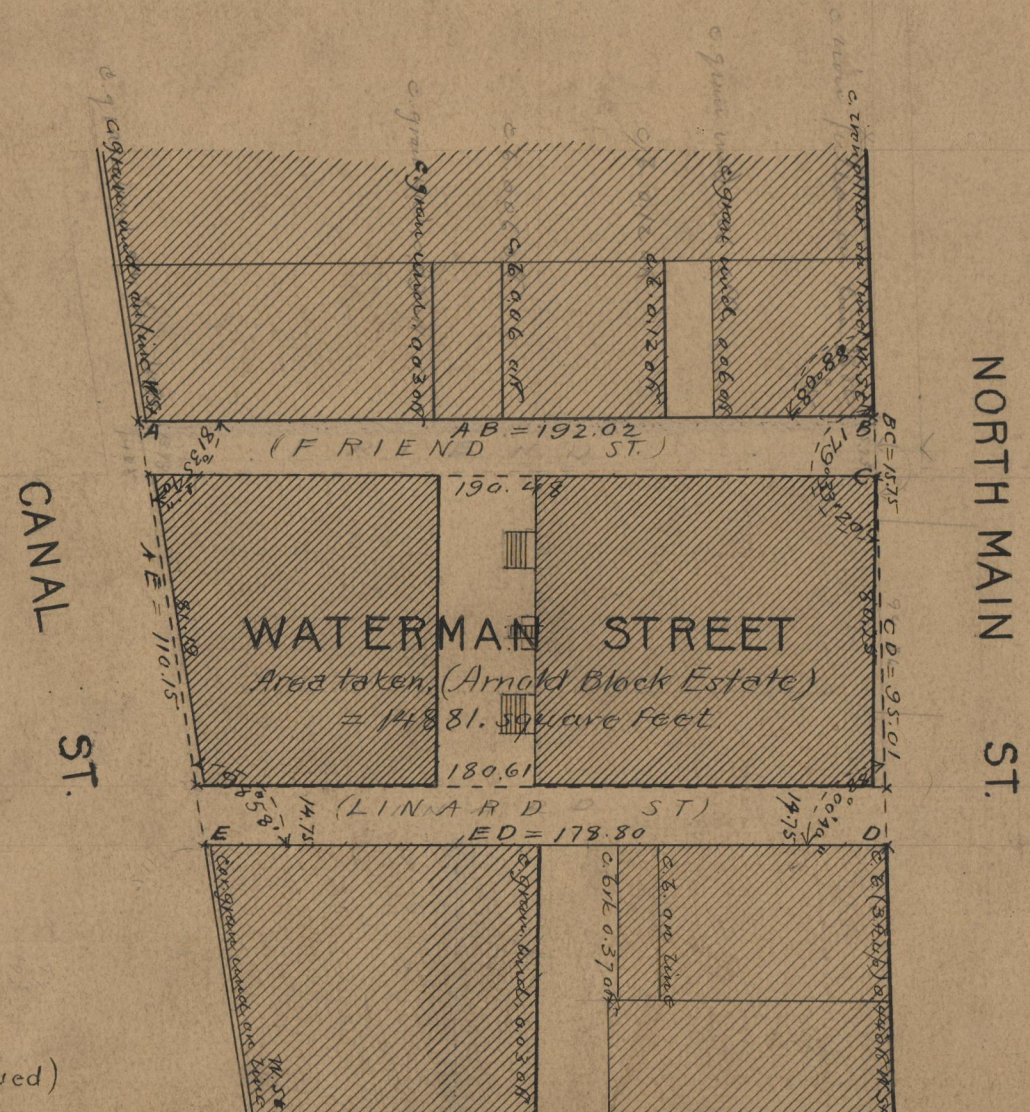


Note, Friend St. on the northerly side of Waterman St., as hereon extended, and Linard St., on the southerly side thereof, were laid out public highways in 1746 by the Proprietors of Providence.

The lines of Friend St., as shown, agree with "Map of a lot in Providence belonging to Moses B. Jenkins" on Card #647 in the Recorder's office.

The south line of Linard St. is made parallel with and 94.95 south of the south line of Friend St., as thus defined, and does not encroach upon the lot south of said Linard St. as defined upon the "Plat of Partition of the Allen and Burges Estate" on Card #613 in the Recorder's office.

(N.B. this note added after Waterman St. was received)



WATERMAN ST.

91
82.19
173.19

OFFICE No.	18887
DRAWN "	71
SHEET "	B-54