

PLAT OF MARYLAND AVENUE

FROM NEW YORK AVE. TO CITY LINE

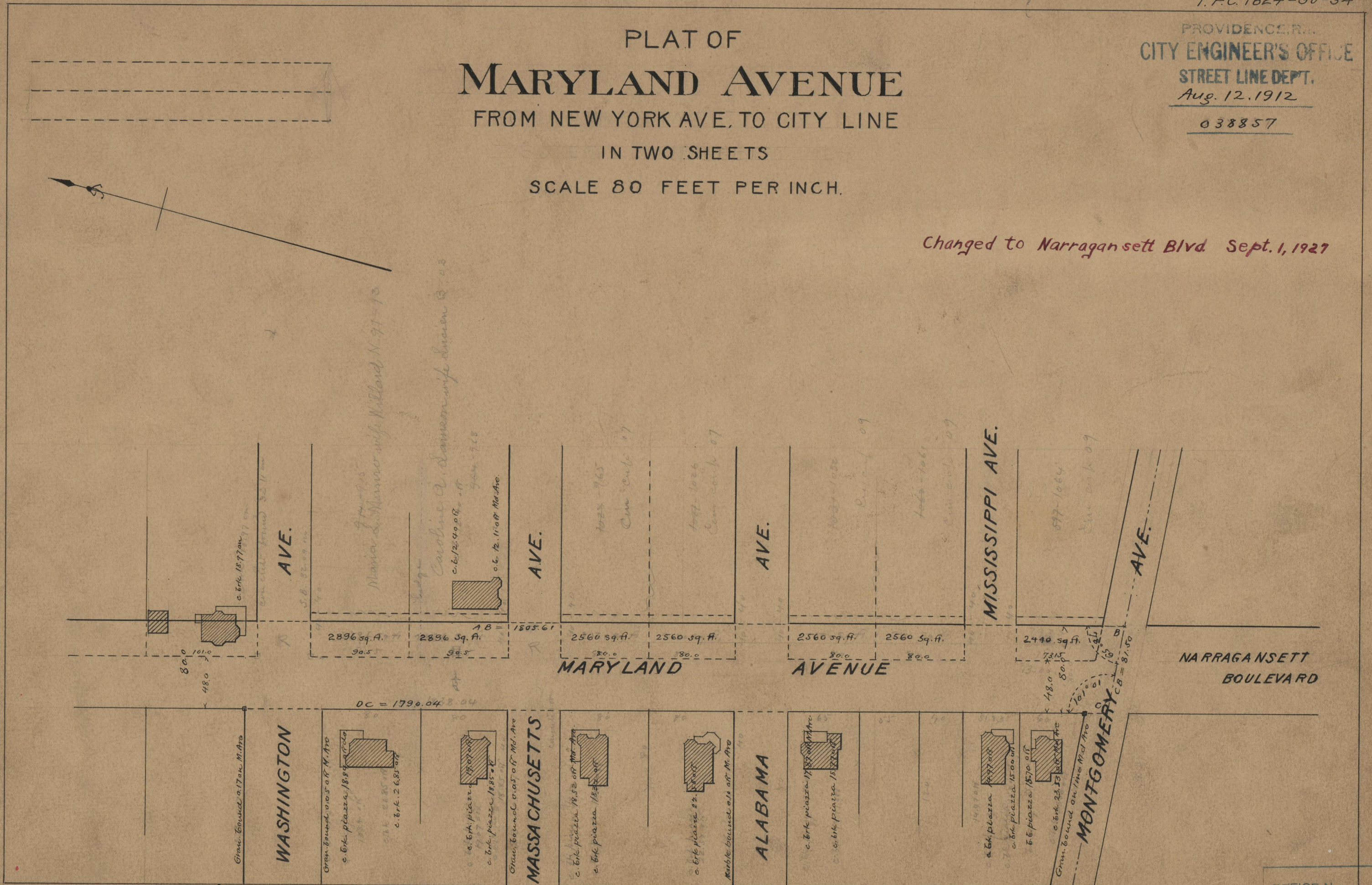
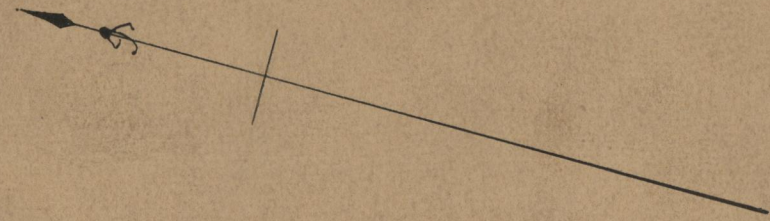
IN TWO SHEETS

SCALE 80 FEET PER INCH.

PROVIDENCE, R.I.
CITY ENGINEER'S OFFICE
STREET LINE DEPT.
Aug. 12, 1912

038857

Changed to Narragansett Blvd. Sept. 1, 1927



OFFICE No. 18886
 DRAWER " 71
 SHEET " B-53