

PROVIDENCE, R.I.
CITY ENGINEER'S OFFICE
STREET LINE DEPT.
July 12, 1912
038795

PLAT OF WHITMARSH STREET

FROM ELMWOOD AVE. TO BUCKLIN ST.

SCALE 60 FEET PER INCH.

DECLARED A PUBLIC HIGHWAY BY THE

BOARD OF ALDERMEN

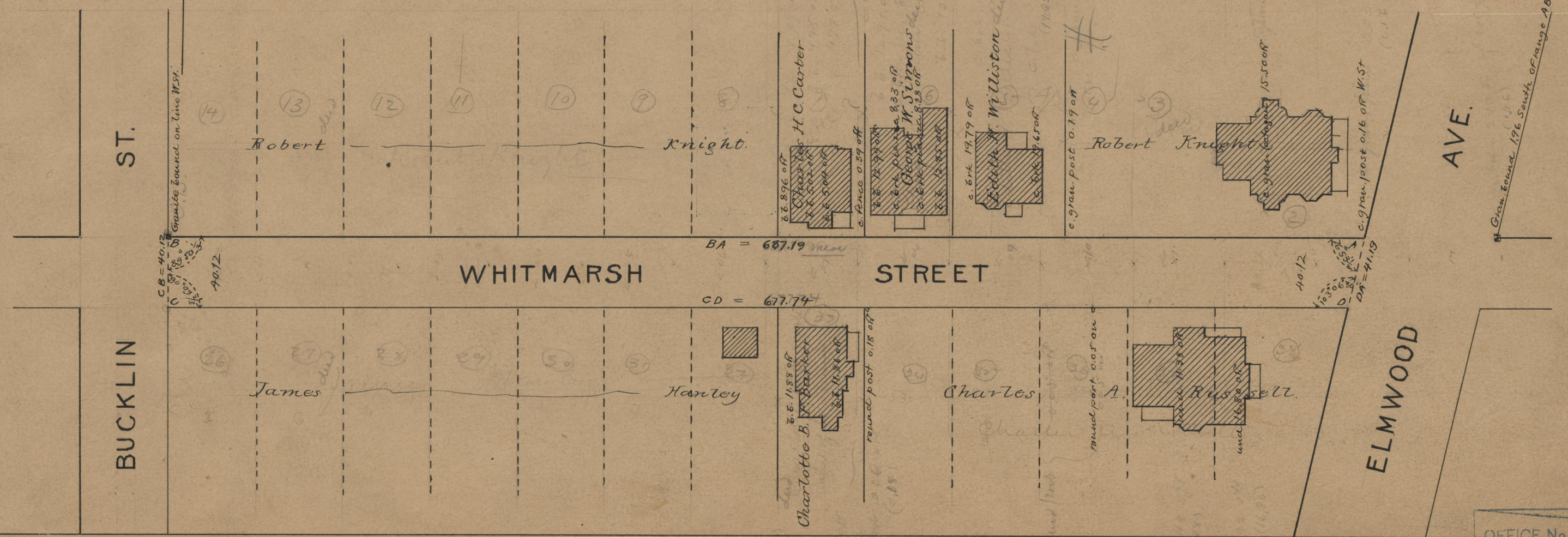
(BY REASON OF TWENTY YEARS USE)

August 2, 1912.

687.19
677.74
2) 1364.93
688.76

Witness _____
City Clerk.

Note, The area declared a public highway is indicated by the letters A B C D.
The lines thus fixed conform to the deeds in Deed Book 392, page 120 and Deed Book 528, page 101, in the Office of the Recorder of Deeds.
all portions of street abutting upon all lots excepting that of Charles H. Carter (lot 7 Locust St. on plat). The statute regarding 20 year use was used to include portion abutting upon this lot.



OFFICE No. 18870
DRAWER " 71
SHEET " B-48