

PROVIDENCE, R.I.  
CITY ENGINEER'S OFFICE  
STREET LINE DEPT.

July 12, 1912

038792

Note, The area declared a public highway  
is indicated by the letters A B C D.

The lines thus fixed conform to the  
deed in Deed Book 211, page 442, in the  
Office of the Recorder of Deeds.

PLAT OF  
**NIAGARA STREET**  
FROM ADELAIDE AVE. TO WARRINGTON ST.  
IN TWO SHEETS

SCALE 50 FEET PER INCH.

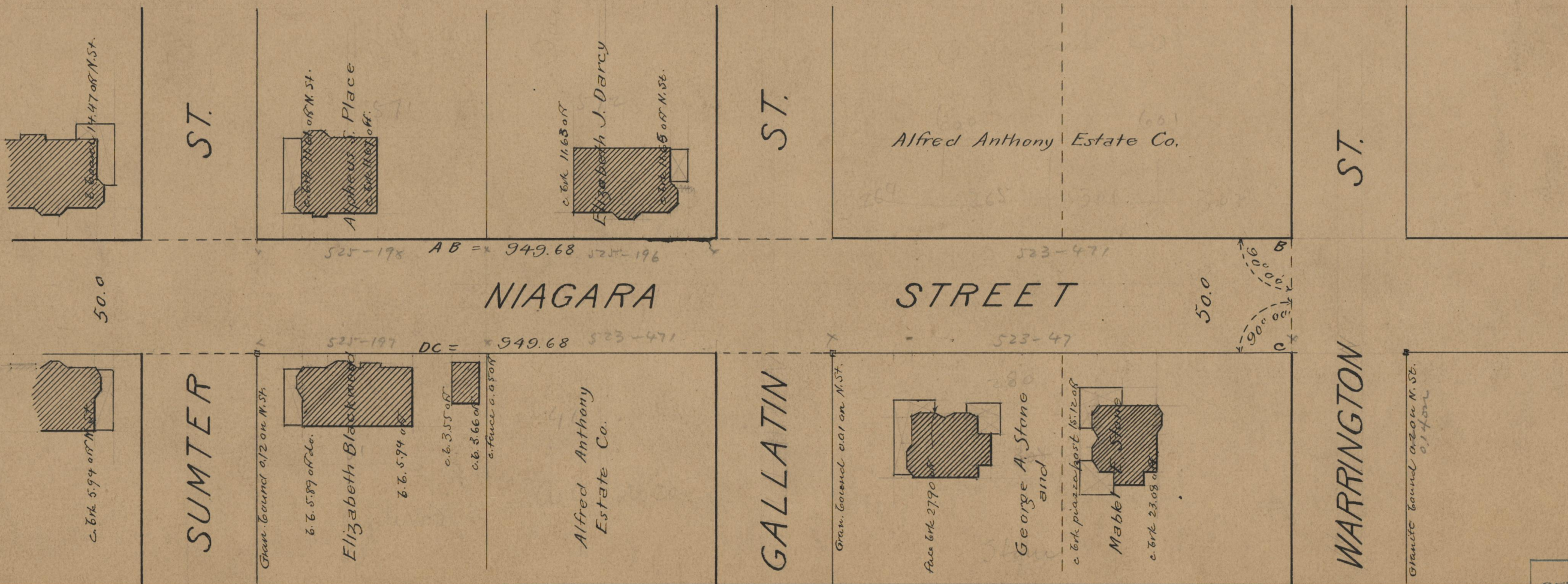
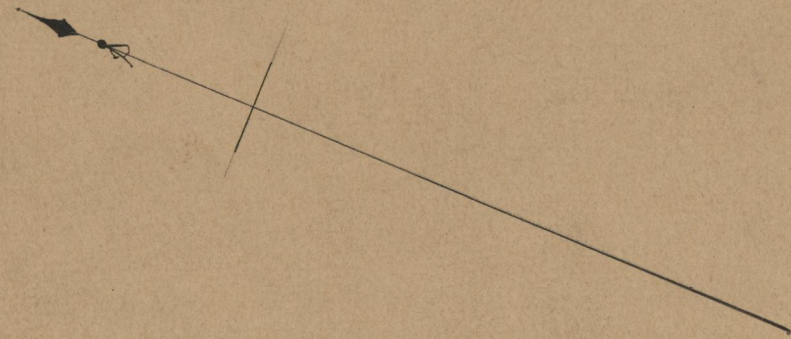
DECLARED A PUBLIC HIGHWAY  
BY RESOLUTION OF THE  
BOARD OF ALDERMEN

May 6, 1912.

749.68

Witness, -----

City Clerk.



OFFICE No. 18868  
DRAWER " 71  
SHEET " B-47