

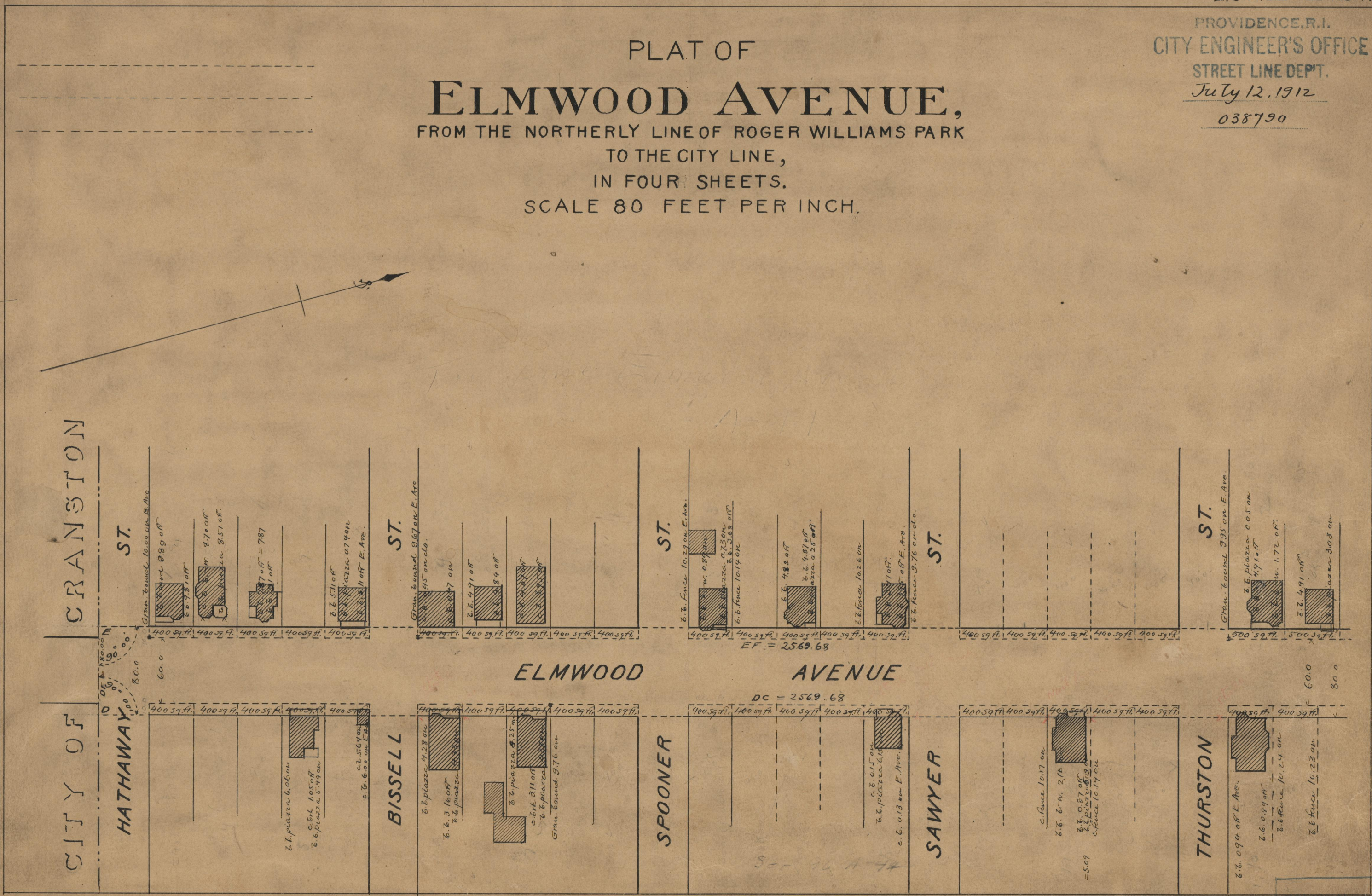
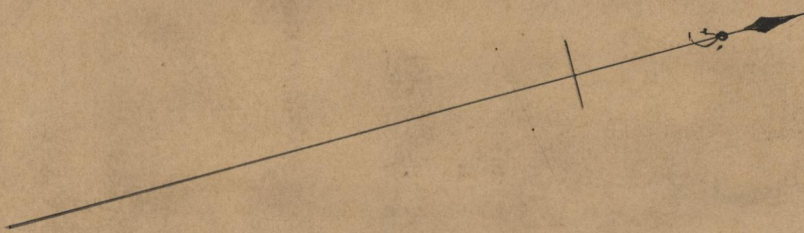
PROVIDENCE, R.I.
CITY ENGINEER'S OFFICE

STREET LINE DEPT.

July 12, 1912

038790

PLAT OF
ELMWOOD AVENUE,
FROM THE NORTHERLY LINE OF ROGER WILLIAMS PARK
TO THE CITY LINE,
IN FOUR SHEETS.
SCALE 80 FEET PER INCH.



Cranston ST.

ST.

CITY OF

HATHAWAY

ST.

BISWELL

ST.

SPOONER

ST.

SAWYER

ST.

THURSTON

ELMWOOD AVENUE

EF = 2569.68

DC = 2569.68

OFFICE No. 18866
DRAWER 71
SHEET B-45

71
B-45