

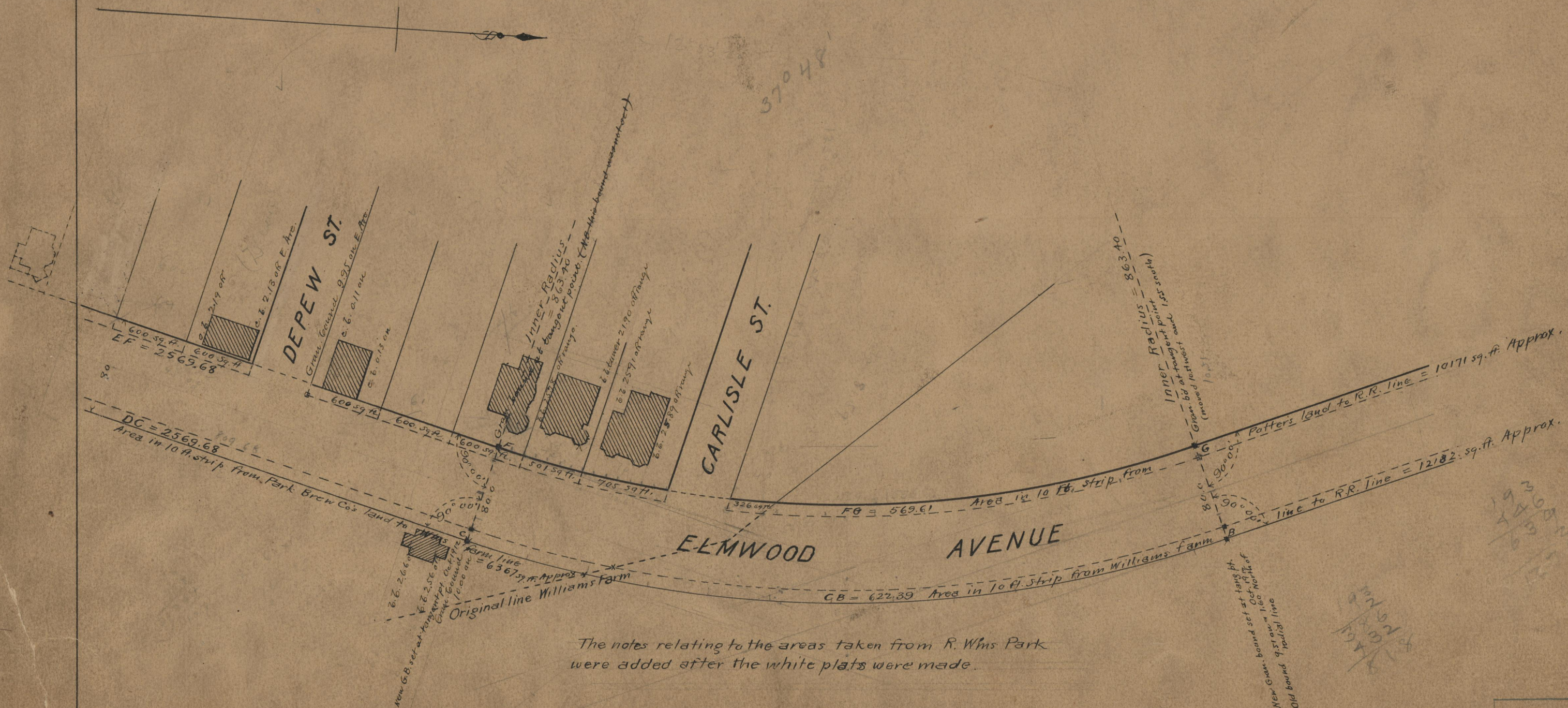
PROVIDENCE, R.I.  
CITY ENGINEER'S OFFICE

STREET LINE DEPT.

July 12, 1912

038788

PLAT OF  
**ELMWOOD AVENUE,**  
FROM THE NORTHERLY LINE OF ROGER WILLIAMS PARK  
TO THE CITY LINE,  
IN FOUR SHEETS.  
SCALE 80 FEET PER INCH.



OFFICE No.	18864
DRAWER	71
CHECK	B-43