

July 10, 1913 B
12-34 15-2-5

SHEET ONE

12-34

E.S.M. XXVIII-163-172

PROVIDENCE, R.I.
CITY ENGINEER'S OFFICE
STREET LINE DEPT.
July 12, 1912
038787

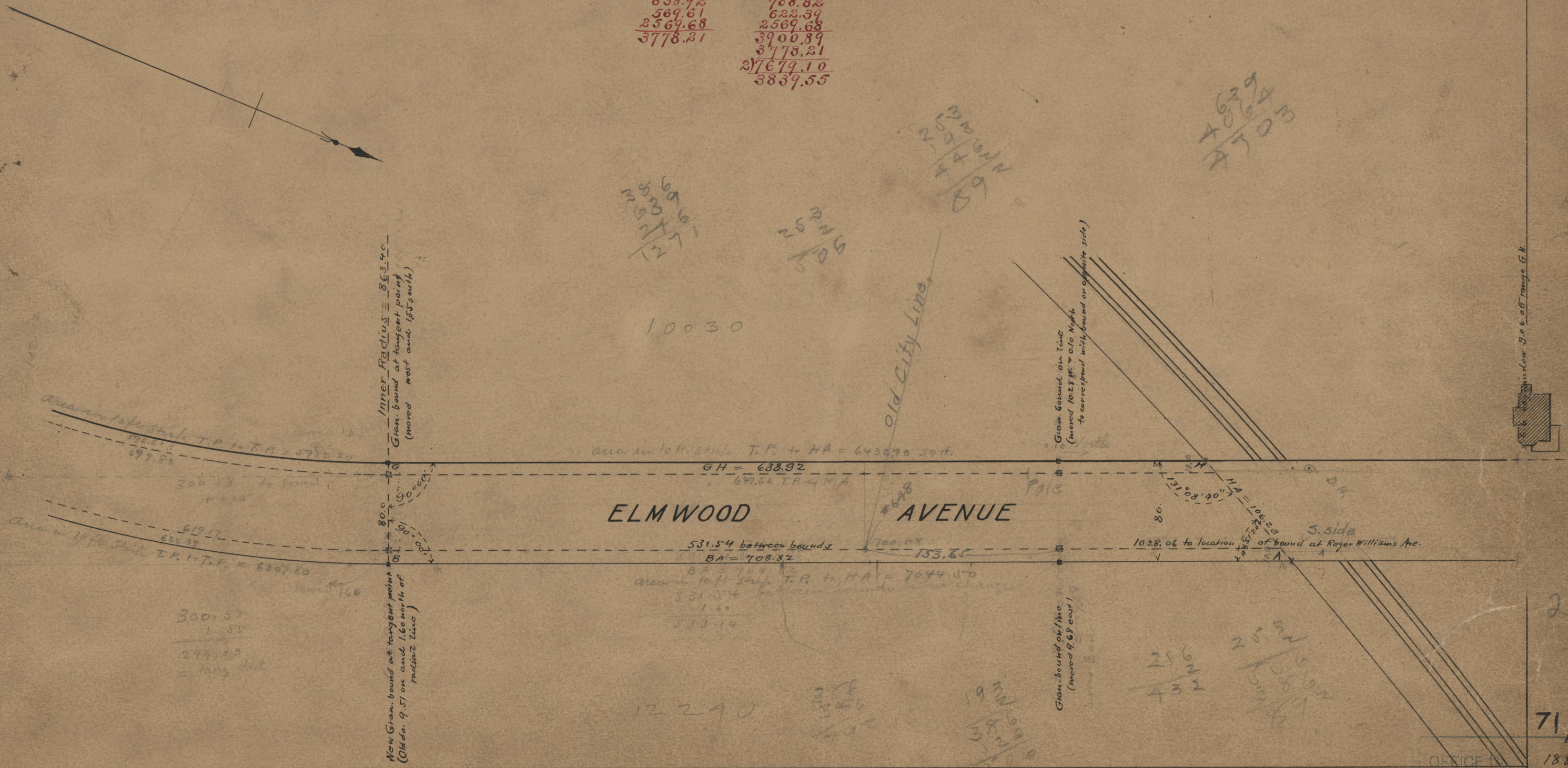
PLAT OF
ELMWOOD AVENUE
FROM THE NORTHERLY LINE OF ROGER WILLIAMS PARK
TO THE CITY LINE
IN FOUR SHEETS
SCALE 80 FEET PER INCH.

638.92 708.82
569.61 623.39
2569.68 2569.68
3778.21 3900.89
 3778.21
217679.10
3839.55

4629
4064
4703

2569.68
3778.21
6347.89

2569.68
3778.21
6347.89



10030

ELMWOOD AVENUE

531.54 between bounds
BA = 708.82

12210

216
432

2532
3080
5612

71/B42

OFFICE NO. 18863

DRAWER 71

SHEET B-5