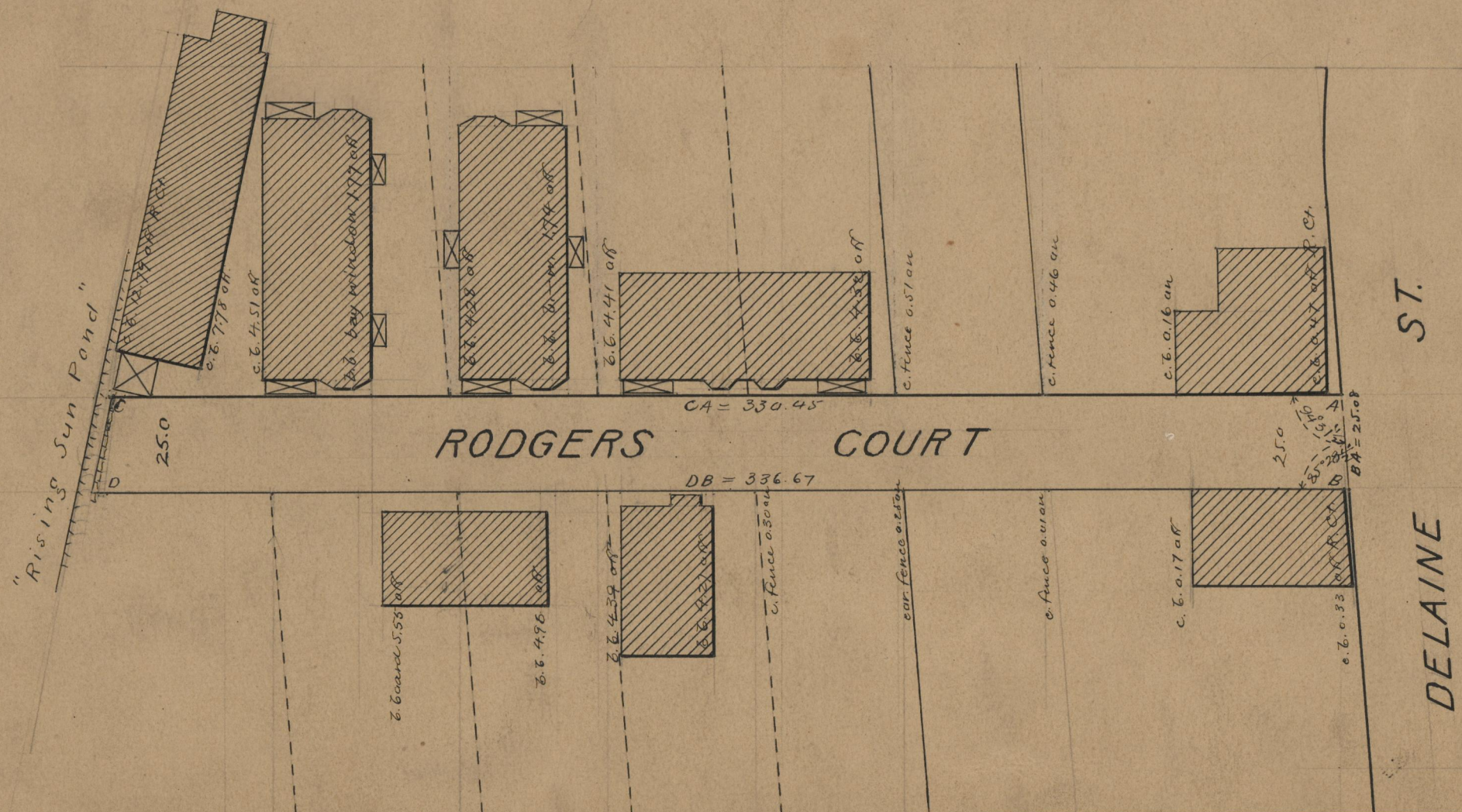
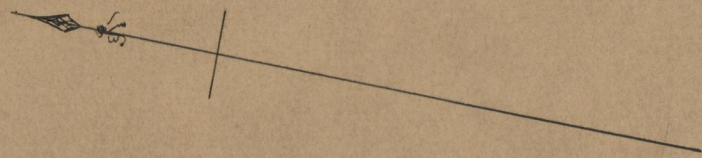


PROVIDENCE, R.I.
CITY ENGINEER'S OFFICE
STREET LINE DEPT.
July 1, 1912,
038760

PLAT OF
RODGERS COURT
FROM DELAINE ST.
TO NORTHERLY TERMINATION.
SCALE 40 FEET PER INCH.

330.75
336.67
2)667.12
333.56 ✓

Changed to Sonoma Court Jan 21, 1915.



OFFICE No. 18862
DRAWER, 71
SHEET, B-41