

PROVIDENCE, R.I.
CITY ENGINEER'S OFFICE
STREET LINE DEPT.

June 18, 1910

037242

Note, The area declared a public highway
is indicated by the letters ABCDEFGH.
The lines thus defined conform to the
deeds recorded in Deed Book.

PLAT OF
ETHAN STREET
UNION
FROM DANIEL AVE. TO BARROWS ST.
IN THREE SHEETS
SCALE 50 FEET PER INCH.

Red notes indicate titles laid out.

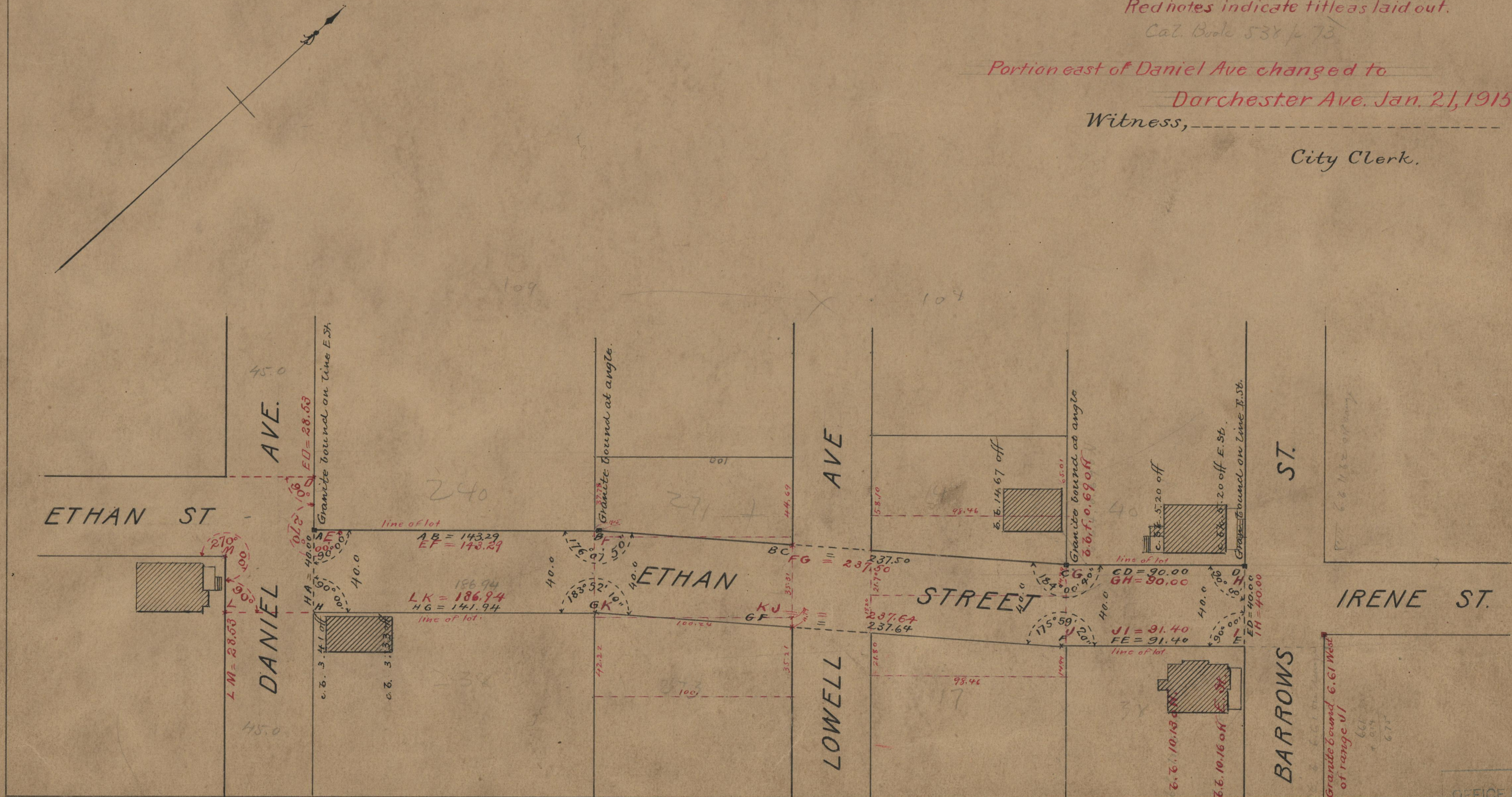
Cal. Book 538 p. 73

Portion east of Daniel Ave changed to

Dorchester Ave. Jan. 21, 1915.

Witness, -----

City Clerk.



71
B37

OFFICE No. 18308
DRAWER " 71
SHEET " B-31