

PROVIDENCE, R.I.
CITY ENGINEER'S OFFICE
STREET LINE DEPT.

Jan 29, 1912.

038404

PLAT OF
LINCOLN AVENUE
FROM BLACKSTONE BOULEVARD
TO SLATER AVE.

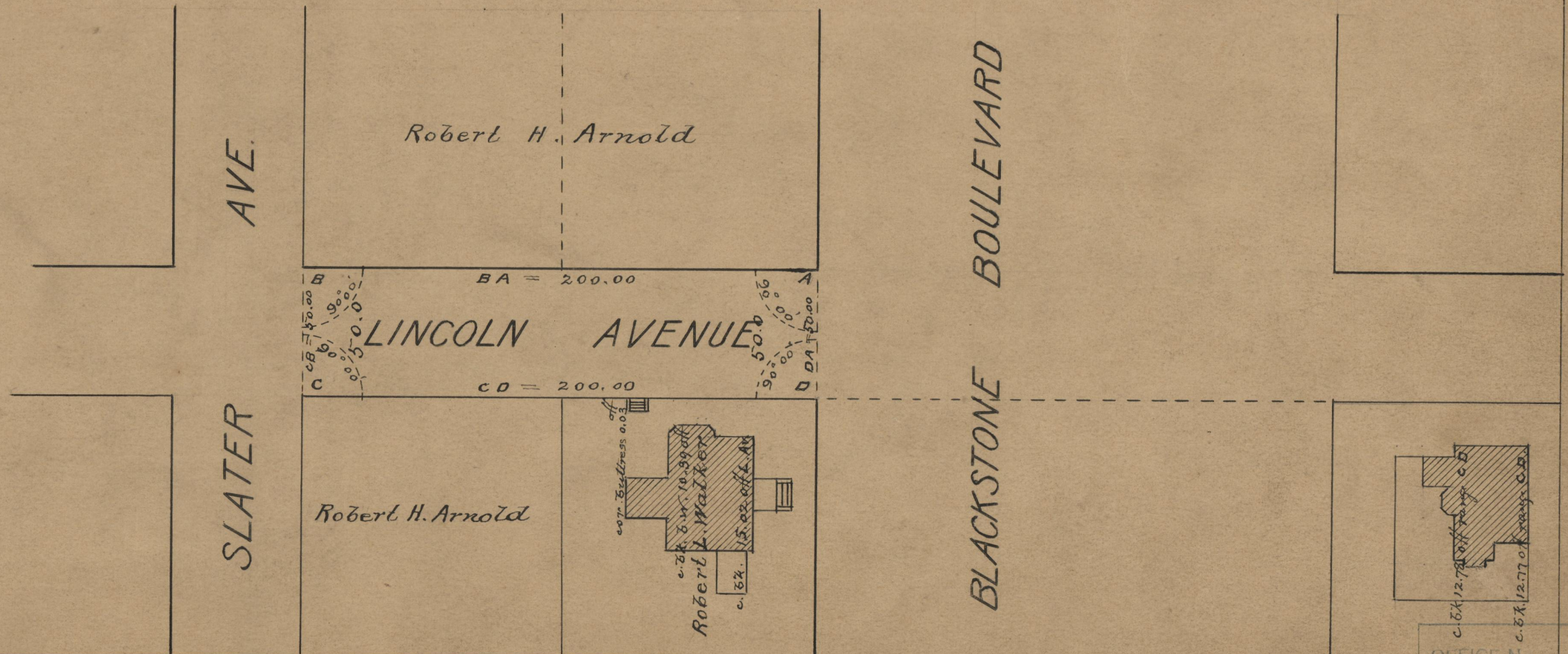
SCALE 50 FEET PER INCH.
DECLARED A PUBLIC HIGHWAY
BY RESOLUTION OF THE
BOARD OF ALDERMEN
January 18, 1912.

200.00

Witness -----

Note. The area declared a public highway
is indicated by the letters A B C D

The lines thus fixed conform to the
deed recorded in Deed Book 511, page 37
in the office of the Recorder of Deeds.



OFFICE No 18772
DRAWN BY 71
SCALE B-30