

PROVIDENCE, R.I.  
CITY ENGINEER'S OFFICE

STREET LINE DEPT.

Jan. 27, 1912.

038400

Note. The area declared a public highway is indicated by the letters A B C D E F G H.  
The lines thus defined conform to the deeds recorded in Deed Books 497, pp. 157-8, 515, pp. 458, 461-2, 517, p. 258, 520, pp. 256, 270, 272-3-4-5, 331-2-3 and 521, pp. 91, 114, 437 in the office of the Recorder of Deeds.

# PLAT OF RUTHERGLEN AVENUE

FROM EASTERLY PROPERTY LINE OF ANGELL LAND CO.

TO THE SUMMIT NEAR PARKMAN ST.

SCALE 50 FEET PER INCH.

DECLARED A PUBLIC HIGHWAY

BY RESOLUTION OF THE

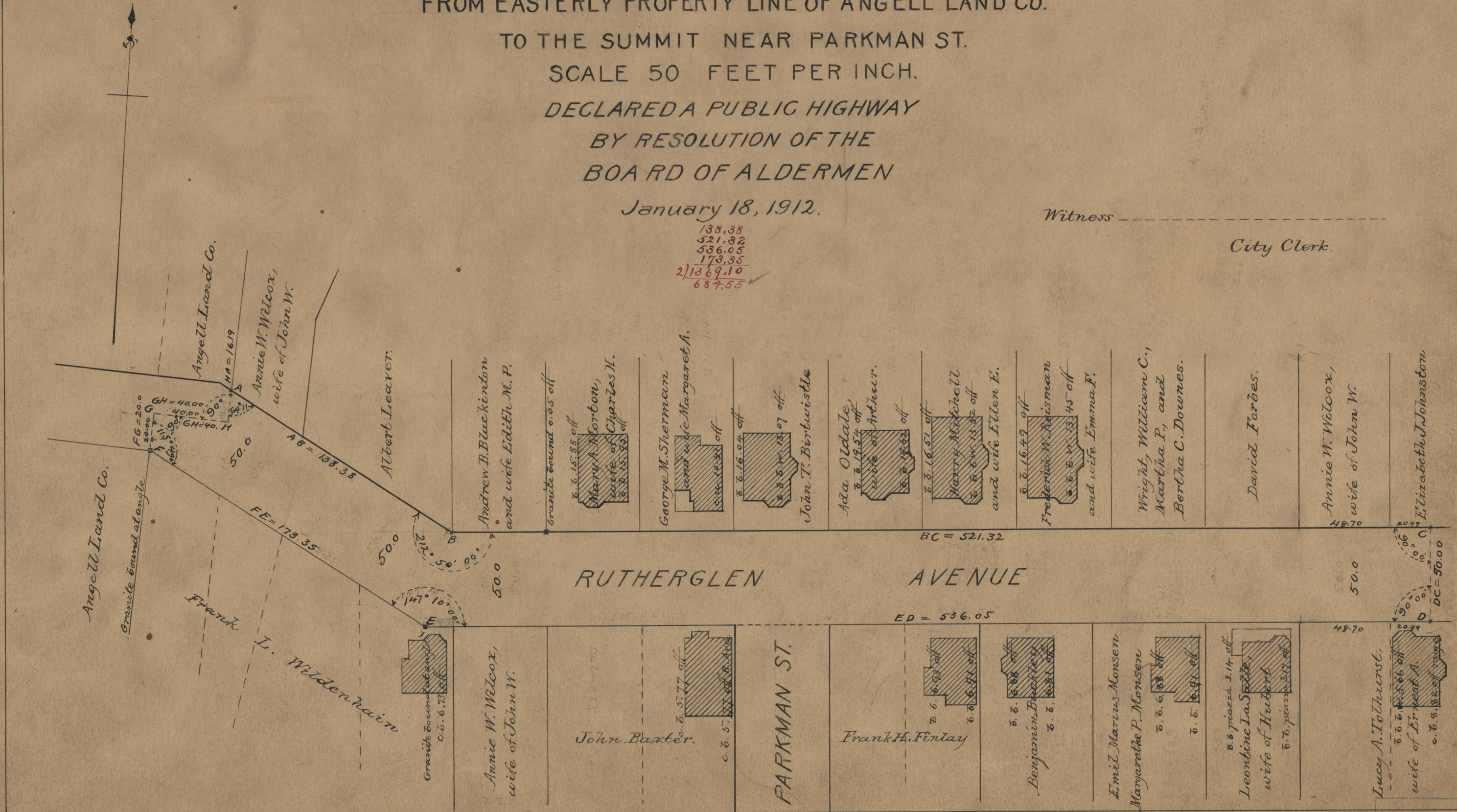
BOARD OF ALDERMEN

January 18, 1912.

Witness -----

City Clerk.

138.38  
521.32  
536.05  
173.35  
2)1369.10  
687.55



71  
B29

OFFICE No. 18758  
DRAWER 71  
FEET B-29

B-27