

PROVIDENCE, R.I.
CITY ENGINEER'S OFFICE
STREET LINE DEPT.
Jan. 8, 1912

038349

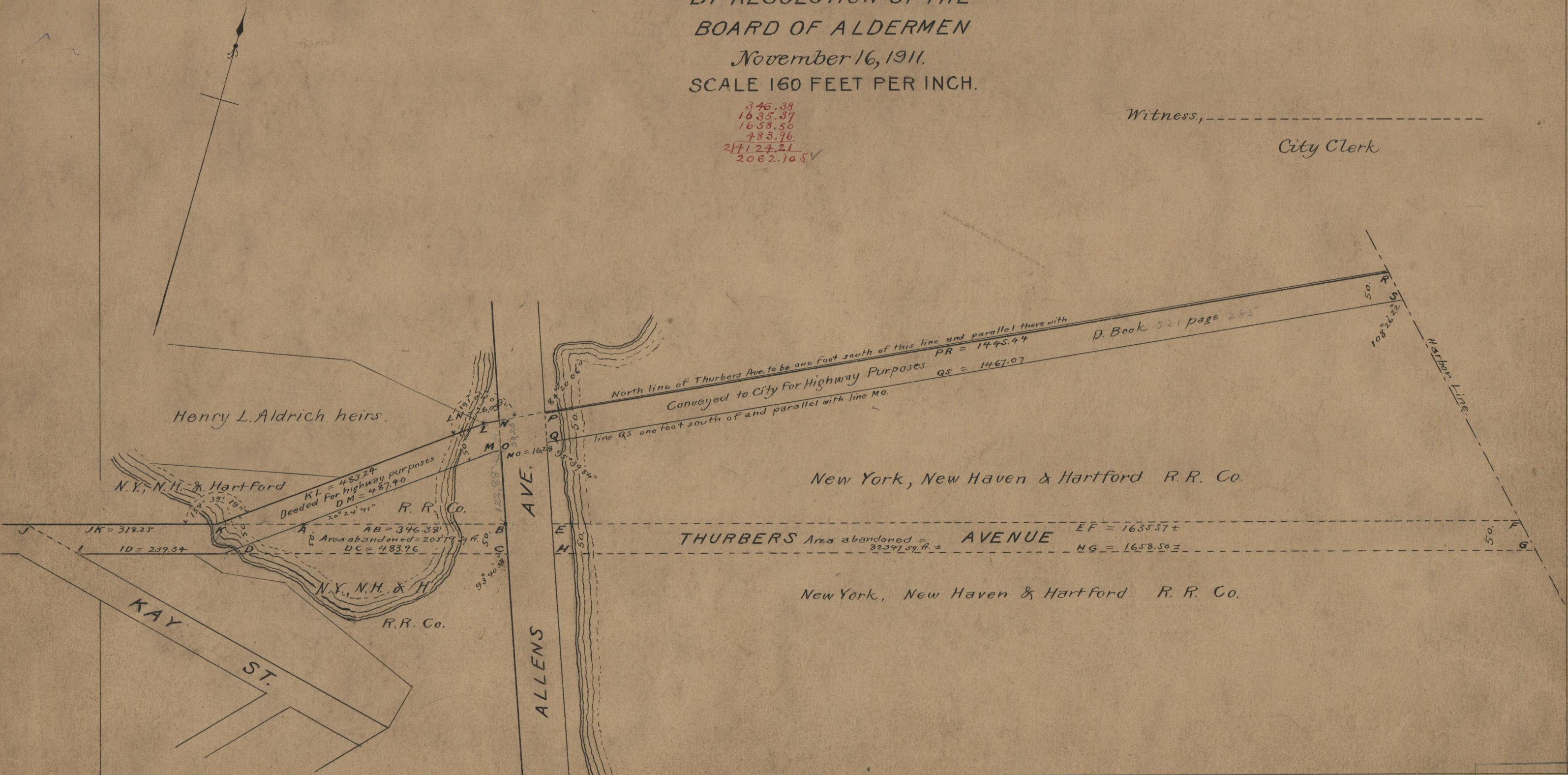
PLAT OF PORTIONS OF
THURBERS AVENUE
DECLARED USELESS AND ABANDONED FOR
HIGHWAY PURPOSES
BY RESOLUTION OF THE
BOARD OF ALDERMEN
November 16, 1911.
SCALE 160 FEET PER INCH.

Note, The area declared useless for
highway is indicated by the letters ABCD
and EFGH.

346.38
1635.37
1658.50
783.76
27127.21
2062.105

Witness, -----

City Clerk



OFFICE No. 18757
DRAWER 71
P-28