

PROVIDENCE, R.I.  
CITY ENGINEER'S OFFICE  
STREET LINE DEPT.  
Dec. 22, 1911

038324-5

# PLAT OF ST. JAMES STREET

FROM GLENHAM ST. NORTHERLY

AS FAR AS PLATTED

SCALE 40 FEET PER INCH.

DECLARED A PUBLIC HIGHWAY

BY RESOLUTION OF THE

BOARD OF ALDERMEN

November 16, 1911,

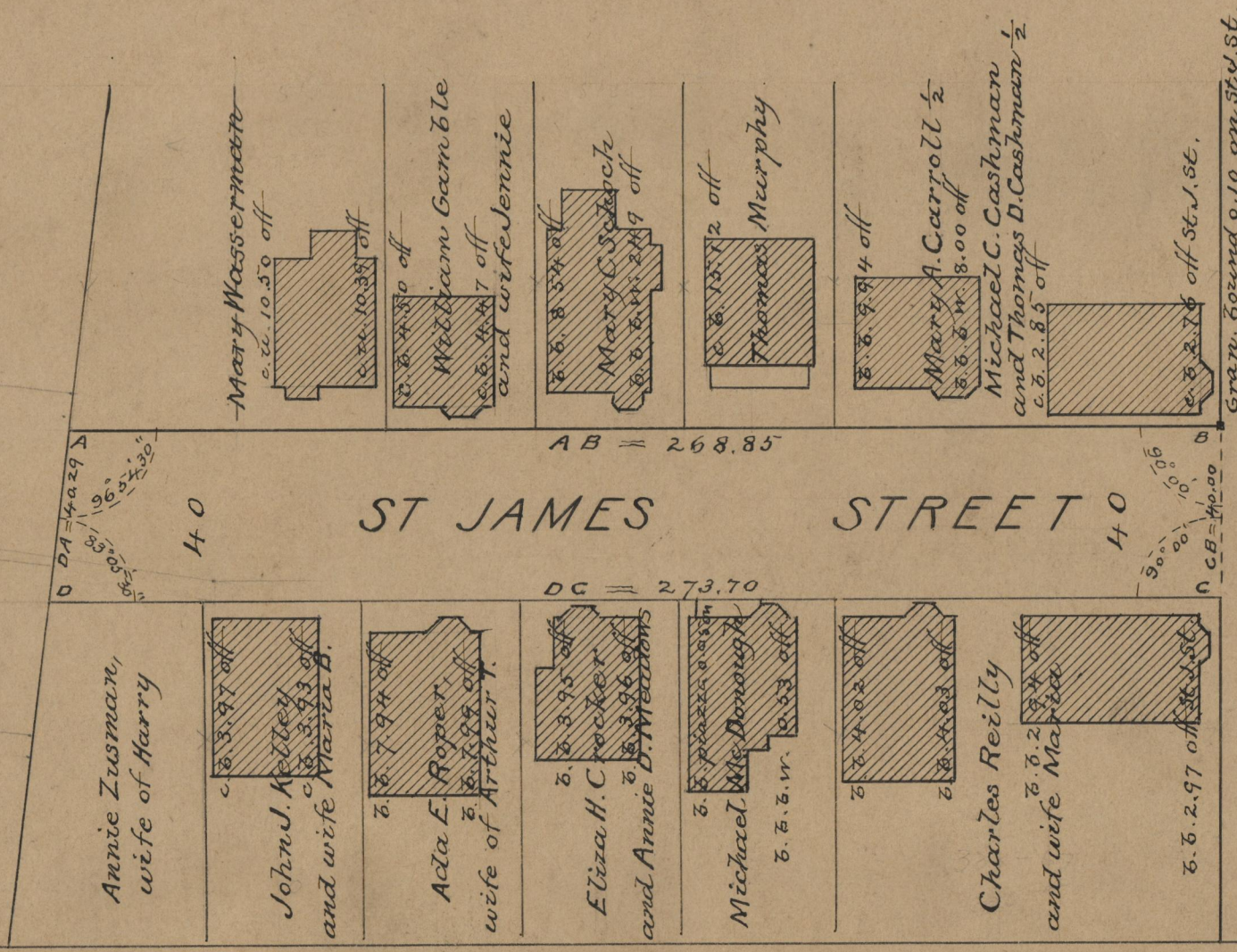
268.85  
273.70  
2)542.55  
271.275 ✓

Witness, \_\_\_\_\_

City Clerk

Note, The area declared a public highway is indicated by the letters A B C D.

The lines conform to the deeds in the Deed Books 388, page 67, 507, page 476, 508, page 443, 511, page 371, 512, pages 337, 357 & 370, 515, pages 5, 6 and 26, in the office of the Recorder of Deeds.



GLENHAM ST.

OFFICE No. 18752  
DRAWER, 71  
SHEET, B-23