

Note, The area established and declared a public highway is indicated by the letters ABCD.
The lines thus fixed conform to those shown on the Belair Plat (Card 463 in the office of the Recorder of Deeds) whereon Belair Ave. was originally platted.

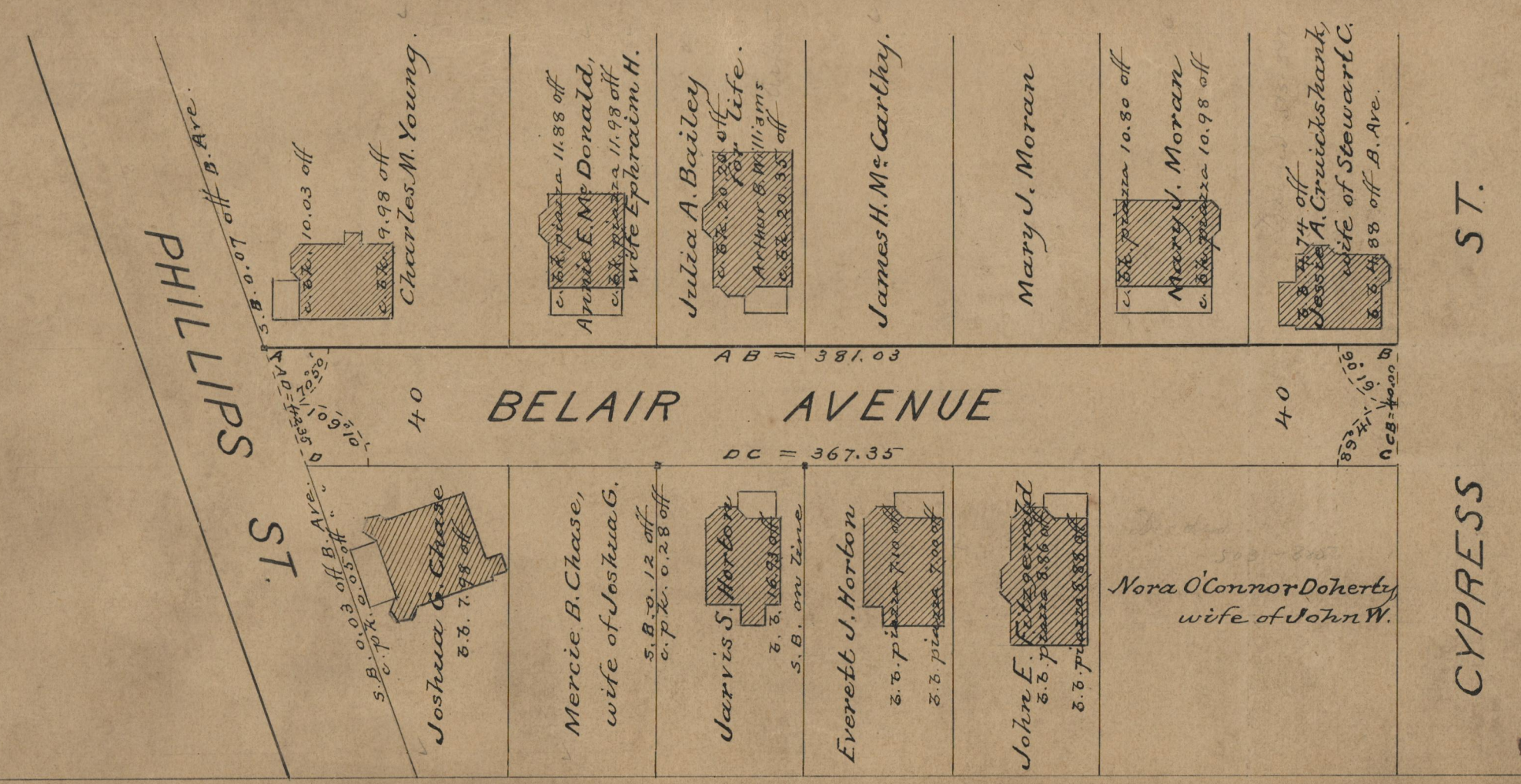
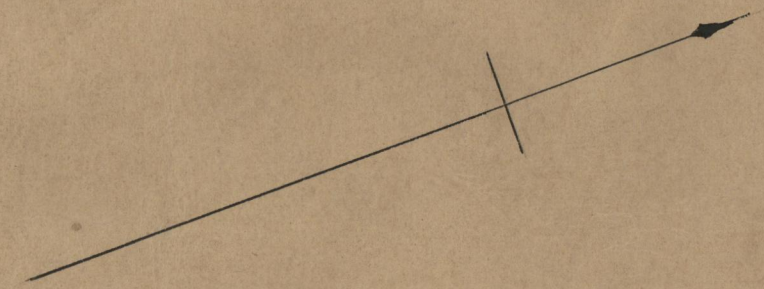
PLAT OF
BELAIR AVENUE
FROM CYPRESS ST. TO PHILLIPS ST.
SCALE 50 FEET PER INCH.

ESTABLISHED AND DECLARED A PUBLIC HIGHWAY
BY RESOLUTION OF THE
BOARD OF ALDERMEN

October 19, 1911.

Witness, _____
City Clerk.

331.03
367.35
277+8.33
374.19



OFFICE No. 18573
DRAWER " 71
SHEET " B-21