

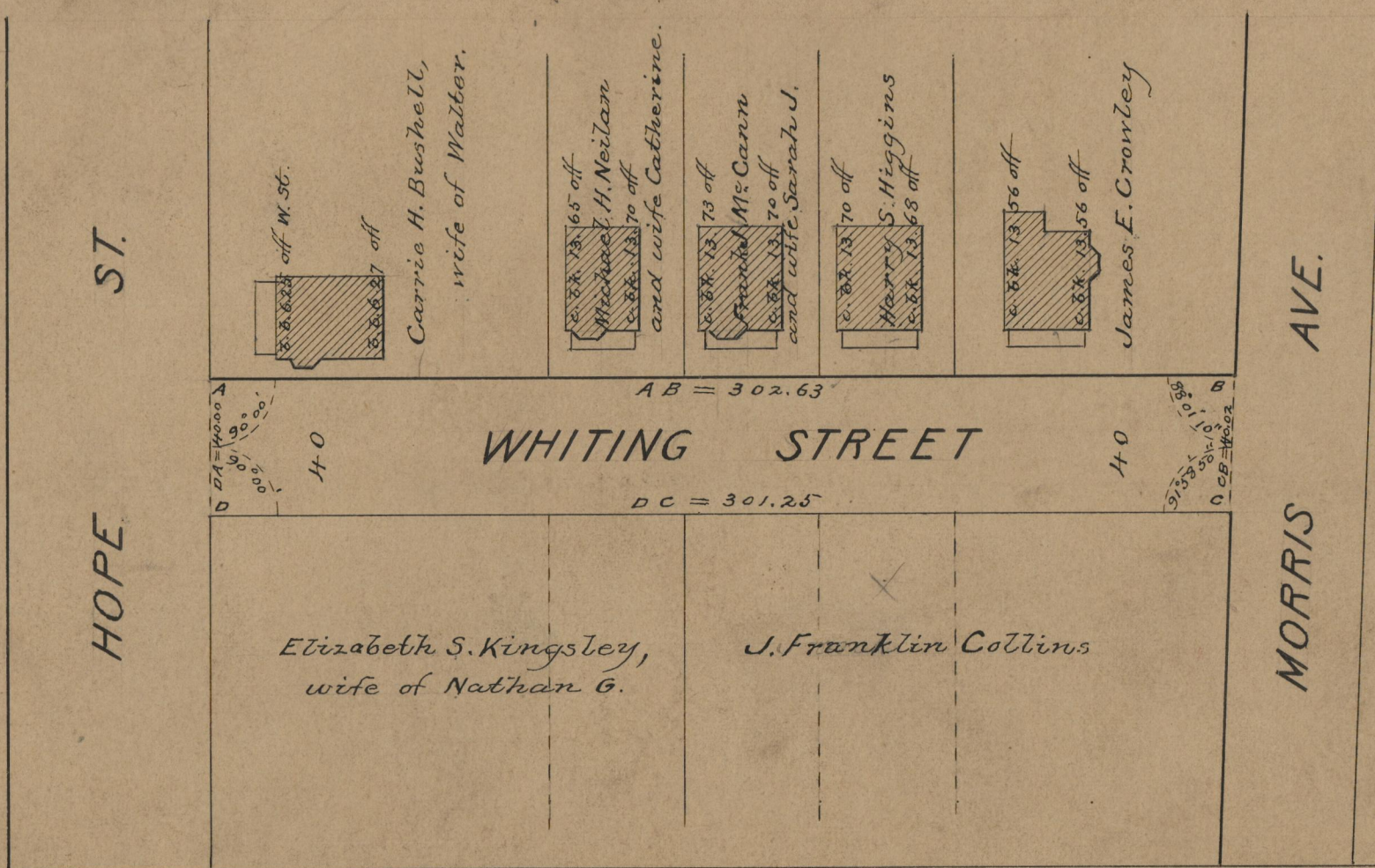
PROVIDENCE, R.I.
CITY ENGINEER'S OFFICE
STREET LINE DEPT.
Oct. 30, 1911.
038190

Note, The area declared a public highway
is indicated by the letters A B C D.
The lines thus fixed conform to the
deed recorded in Deed Book 460, page
44, in the Office of the Recorder of Deeds.

PLAT OF
WHITING STREET
FROM HOPE ST. TO MORRIS AVE.
SCALE 50 FEET PER INCH.
DECLARED A PUBLIC HIGHWAY
BY RESOLUTION OF THE
BOARD OF ALDERMEN
Sept. 21, 1911.

302.63
301.25
2)603.88
301.94 ✓

Witness, -----



OFFICE No. 18562
DRAWER " 71
SHEET " B-16