

PROVIDENCE, R.I.
CITY ENGINEER'S OFFICE

STREET LINE DEPT.

Aug. 31, 1911.

038042

673

Note, The area declared a public highway is indicated by the letters ABCD.

The lines thus fixed conform with the deeds recorded in Deed Books 365, page 270, 366, page 323, and 387, page 158, in the Office of the Recorder of Deeds.

PLAT OF
MILES AVENUE
FROM PRESIDENT AVE. TO LLOYD AVE.

SCALE 50 FEET PER INCH.

DECLARED A PUBLIC HIGHWAY

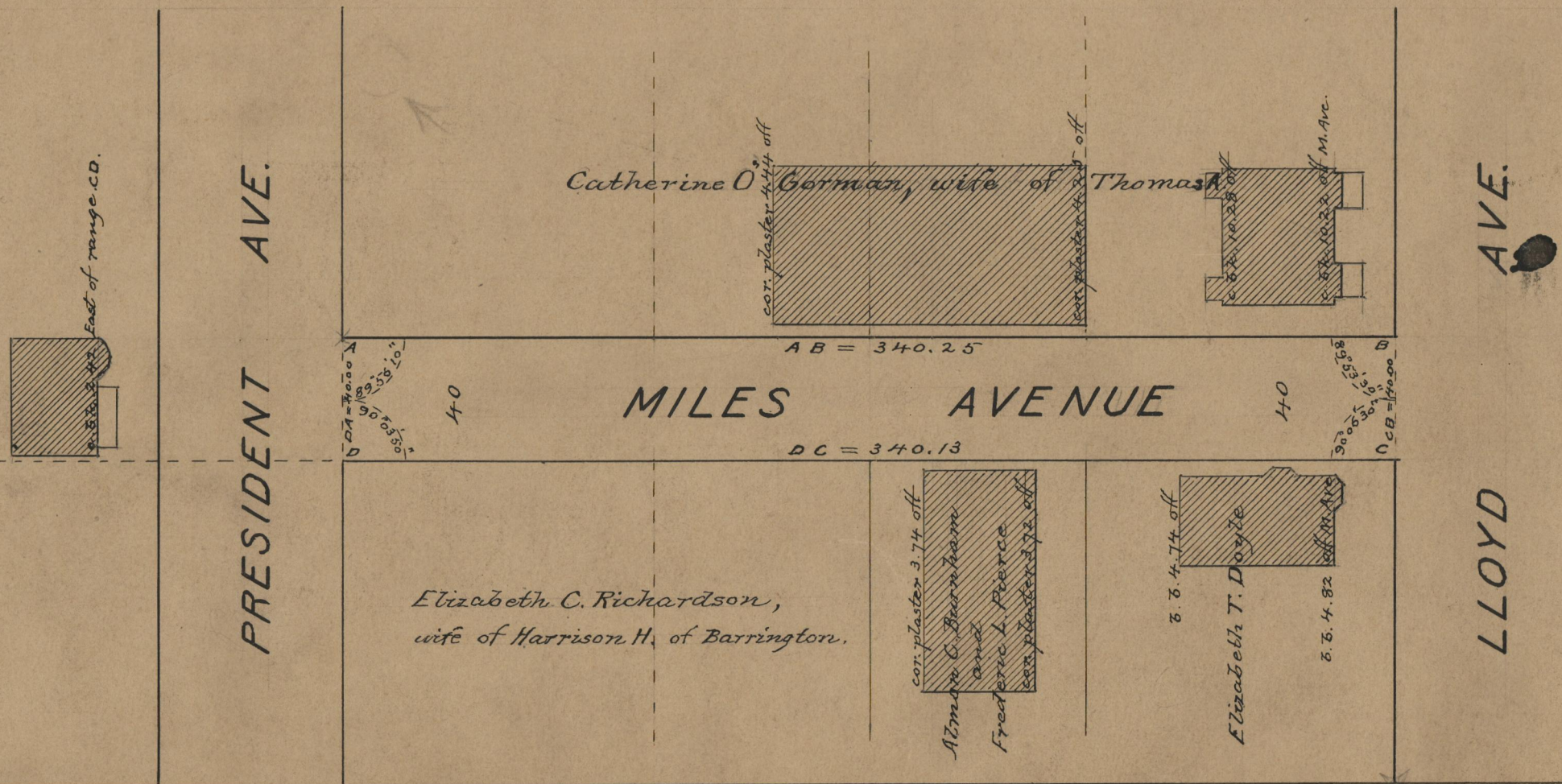
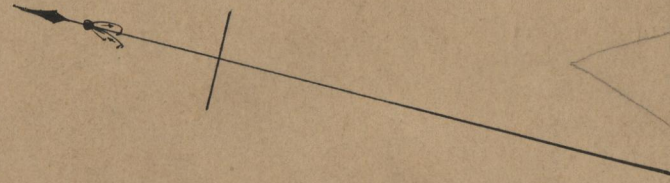
BY RESOLUTION OF THE

BOARD OF ALDERMEN

June 15, 1911.

340.19

Witness, _____



OFFICE No. 18529
DRAWER " 71
SHEET " B-13