

PROVIDENCE, R.I.
CITY ENGINEER'S OFFICE

STREET LINE DEPT.

Aug. 31, 1911.

038040

041

Note, The area declared a public highway
is indicated by the letters A B C D.
The lines thus fixed conform with the deeds
recorded in Deed Books 365, page 270, and 366,
page 323, in the Office of the Recorder of Deeds.

PLAT OF
HOBART AVENUE
FROM PRESIDENT AVE. TO LLOYD AVE.

SCALE 50 FEET PER INCH.

DECLARED A PUBLIC HIGHWAY
BY RESOLUTION OF THE
BOARD OF ALDERMEN.

June 15, 1911.

Witness: -----

341.66
341.57
2683.20
341.60 ✓

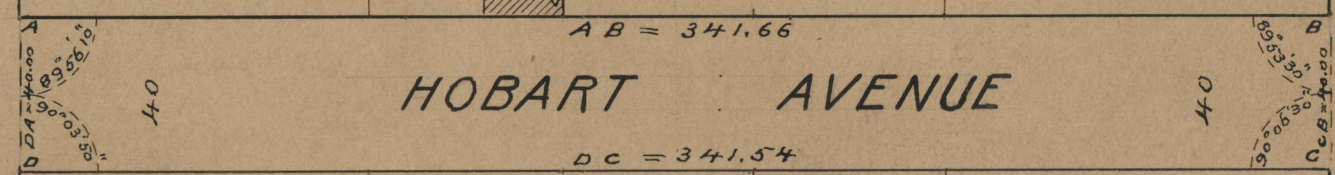
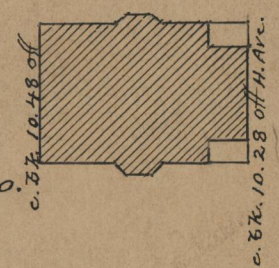
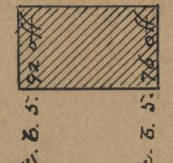
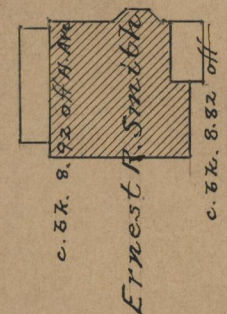
PRESIDENT AVE.

LLOYD AVE.

Edwin A. Smith.

HOBART AVENUE

Robert E. Smith Land Co.



OFFICE No. 18528
DRAWER " 71
SHEET " B-12