

PROVIDENCE, R.I.
CITY ENGINEER'S OFFICE
STREET LINE DEPT.
Aug. 31, 1911.
038038

Note, The area declared a public highway
is indicated by the letters ABCD.
The lines thus fixed conform with the
deed recorded in Deed Book 497, page
30, in the Office of the Recorder of Deeds.

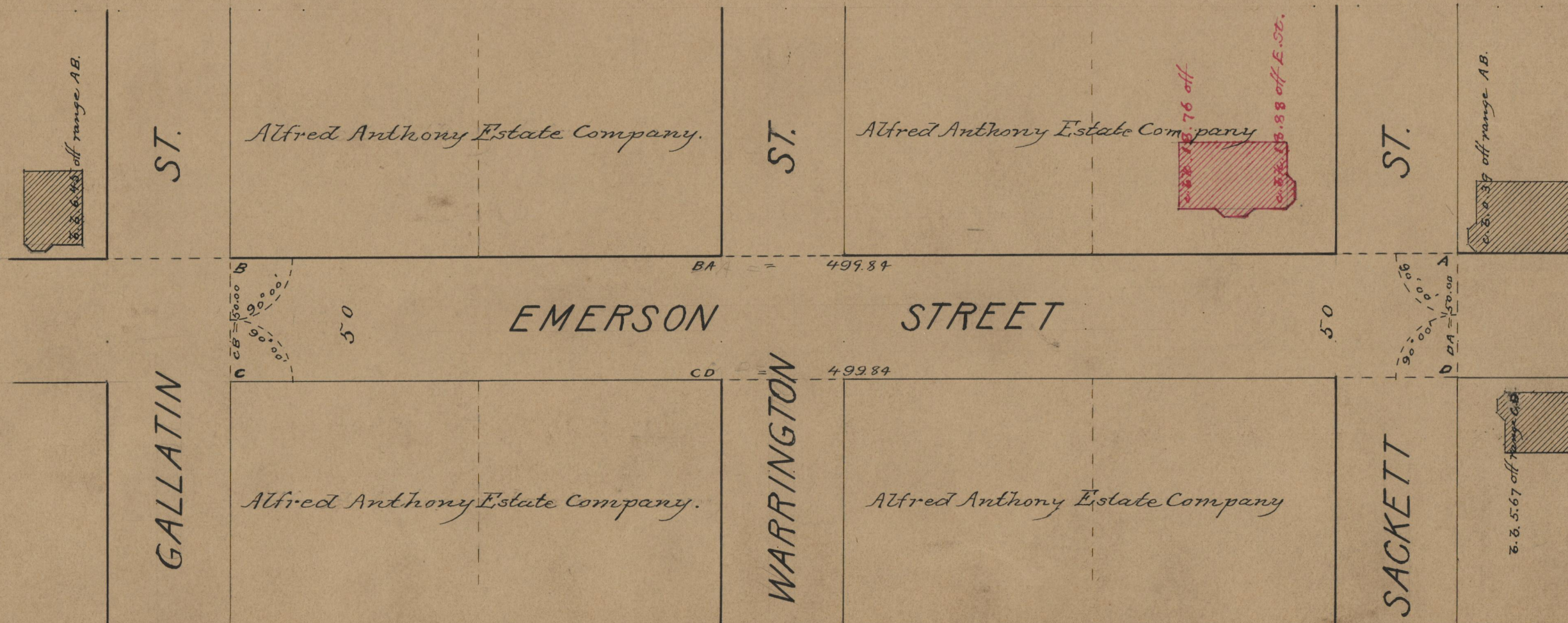
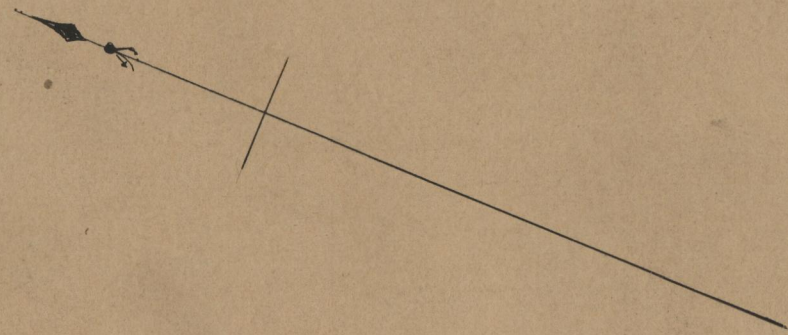
497-30

PLAT OF
EMERSON STREET
FROM SOUTHERLY LINE OF SACKETT ST.
TO GALLATIN ST.

SCALE 50 FEET PER INCH.
DECLARED A PUBLIC HIGHWAY
BY RESOLUTION OF THE
BOARD OF ALDERMEN
June 15, 1911.

Witness, -----

Red offsets taken Aug. 23, 1911.



OFFICE No. 18526
DRAWER " 71
SHEET " B-11