

PROVIDENCE, R.I.  
CITY ENGINEER'S OFFICE

STREET LINE DEPT.

Aug. 31, 1911.

038036

037

Note, The area declared a public highway  
is indicated by the letters ABCD.

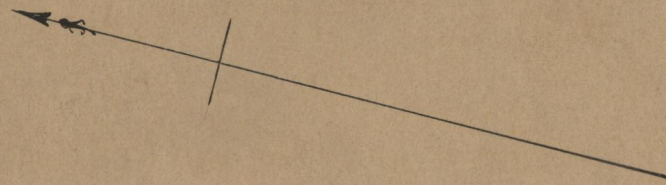
The lines thus fixed conform with  
the deed recorded in Deed Book 365,  
page 270, in the office of the Recorder of Deeds.

PLAT OF  
**EDISON AVENUE**  
FROM PRESIDENT AVE. TO LLOYD AVE.  
SCALE 50 FEET PER INCH.

DECLARED A PUBLIC HIGHWAY  
BY RESOLUTION OF THE  
BOARD OF ALDERMEN  
June 15, 1911.

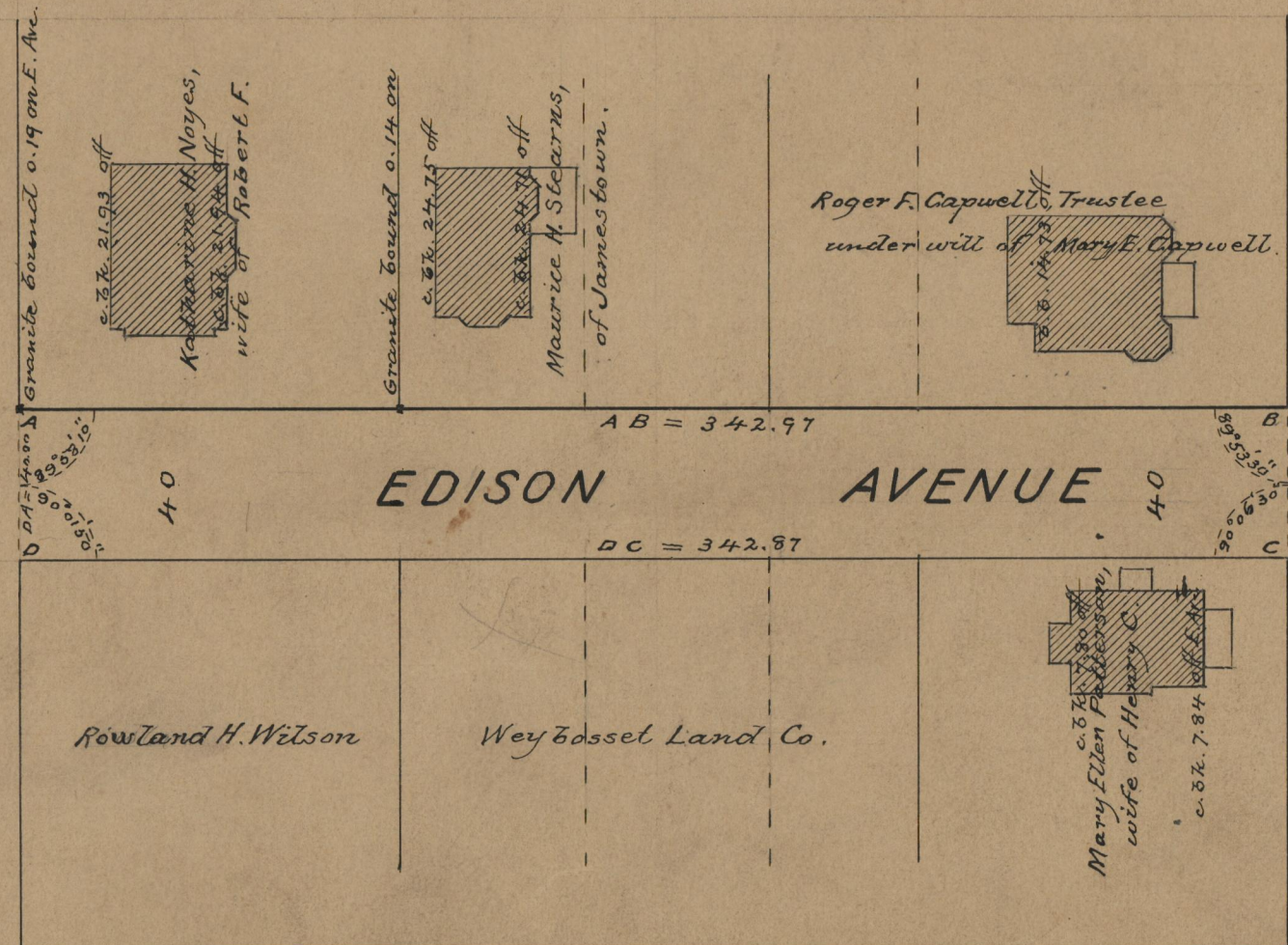
Witness, -----

342.97  
87  
2) 87  
342.92



PRESIDENT AVE.

LLOYD AVE.



OFFICE No. 18526  
DRAWER " 71  
SHEET " B-10