

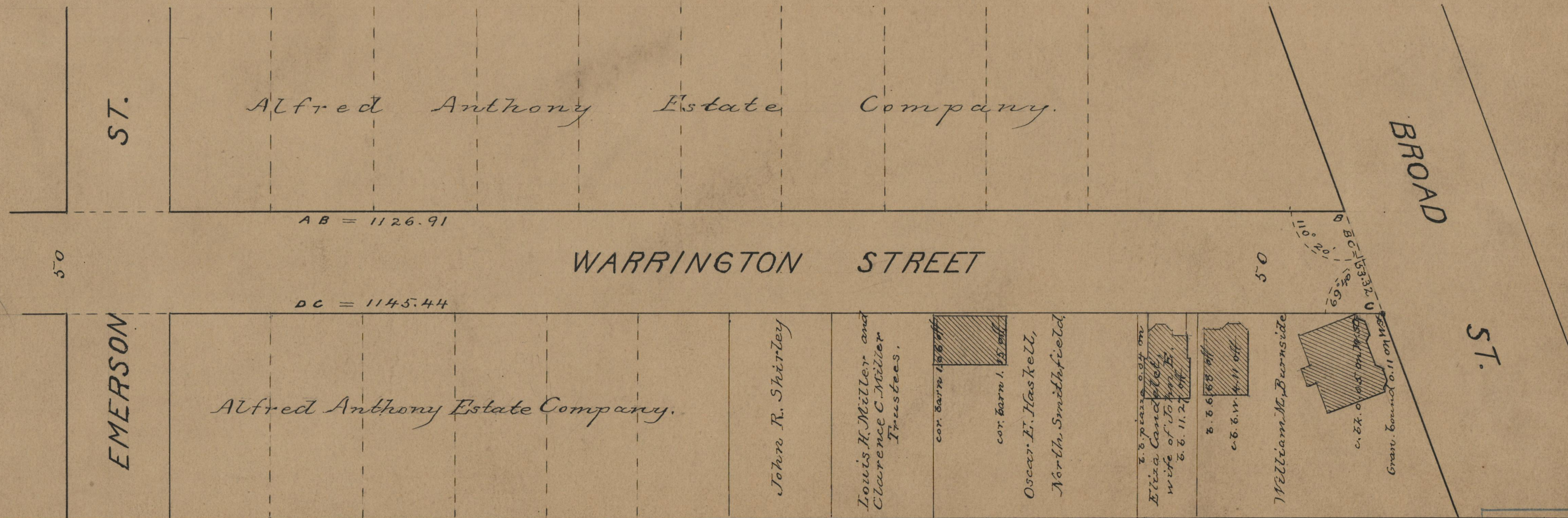
PROVIDENCE, R.I.
CITY ENGINEER'S OFFICE
STREET LINE DEPT.
Aug. 31, 1911.
038045

Note, The area declared a public highway is indicated by the letters A B C D.
The lines thus fixed conform with the deeds recorded in Deed Books 421, page 50, and 497, pages 404, 423, 429, and 456, in the office of the Recorder of Deeds.

PLAT OF WARRINGTON STREET

FROM NIAGARA ST. TO BROAD ST.

IN TWO SHEETS,
SCALE 50 FEET PER INCH;
DECLARED A PUBLIC HIGHWAY
BY RESOLUTION OF THE
BOARD OF ALDERMEN,
June 15, 1911.



OFFICE No. 18525
DRAWER " 71
SHEET " B-9