

PROVIDENCE, R.I.
CITY ENGINEER'S OFFICE

STREET LINE DEPT.
Aug. 31, 1911.

038044

076

Note, The area declared a public highway is indicated by the letters ABCD.

The lines thus fixed conform with the deeds recorded in Deed Books 421, page 50, and 497, pages 404, 423, 429 and 456, in the office of the Recorder of Deeds.

D.B. 407 p. 497 should have been mentioned
" " 410 p. 184 Niagara St. to Wilson St.

These two include all of Warrington St. from Wilson St. to E. line of Niagara St.

PLAT OF WARRINGTON STREET

FROM NIAGARA ST. TO BROAD ST.,

IN TWO SHEETS,

SCALE 50 FEET PER INCH;

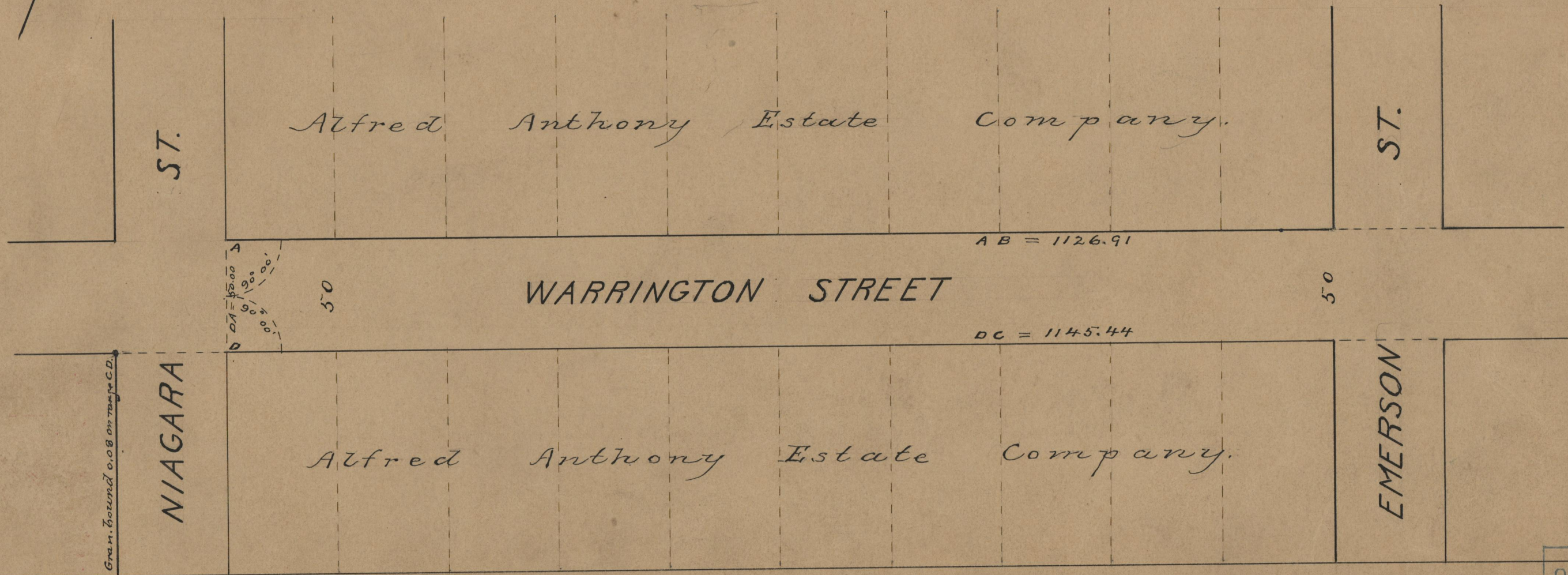
DECLARED A PUBLIC HIGHWAY

BY RESOLUTION OF THE

BOARD OF ALDERMEN,

June 15, 1911.

1126.91
1145.44
2)2272.35 ✓
1136.175



OFFICE No. 18524
DRAWER " 71
SHEET " B-8