

PROVIDENCE, R.I.
CITY ENGINEER'S OFFICE

STREET LINE DEPT.

May 29, 1911

037843

Note, The area declared a public highway is indicated by the letters A B C D.
The lines thus fixed conform with the deeds recorded in Deed Books 449, page 85, 503, pages 378-9 and 385-6-7, and 505, page 382, in the office of the Recorder of Deeds.

PLAT OF CYPRESS STREET

FROM HOPE ST. TO MORRIS AVE.

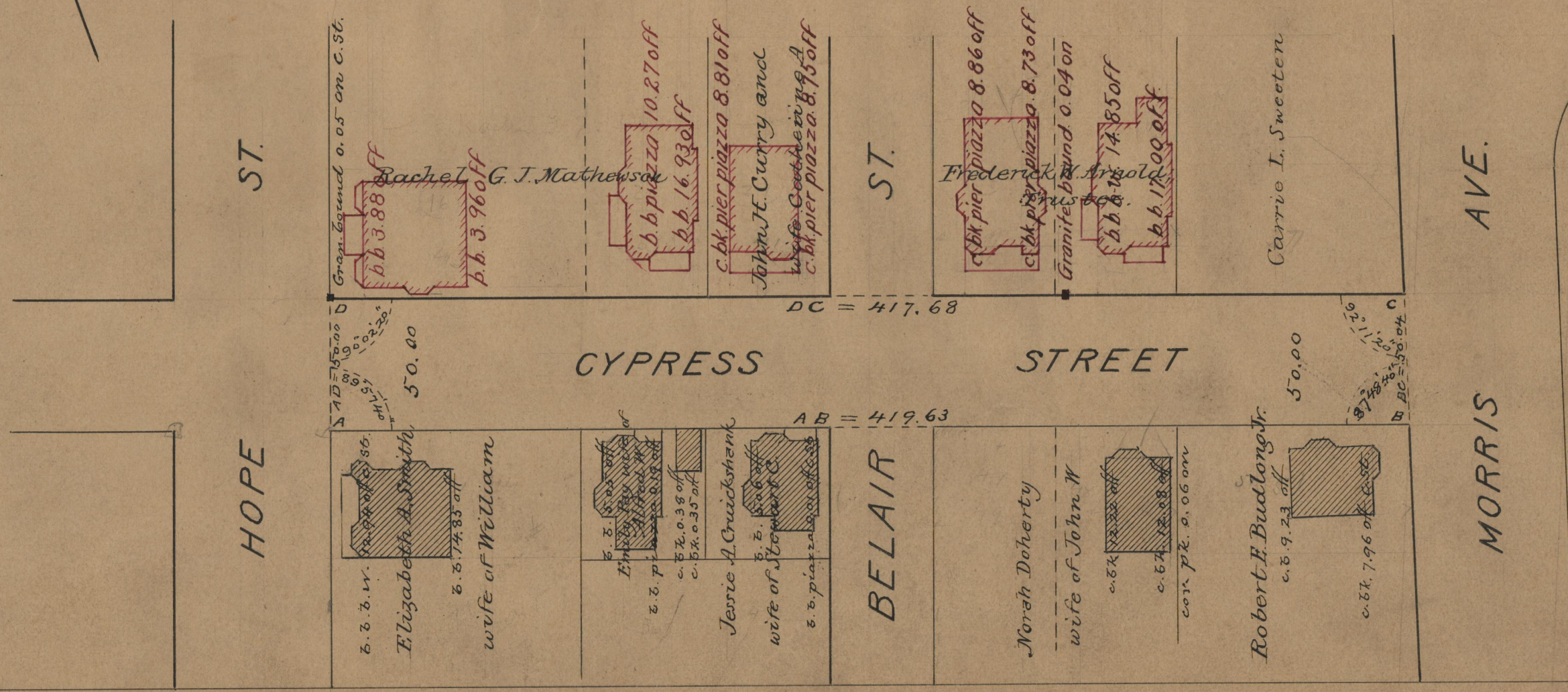
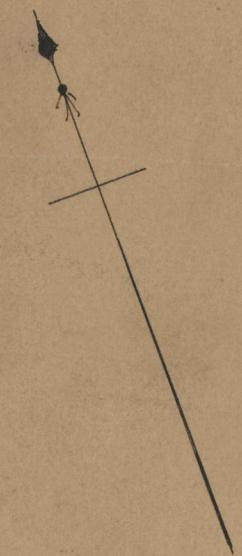
SCALE 50 FEET PER INCH.

DECLARED A PUBLIC HIGHWAY
BY RESOLUTION OF THE
BOARD OF ALDERMEN.

April 20, 1911.

417.68
+19.63

2837.31
+18.655 ✓



71
B3

OFFICE No. 18519
DRAWER " 71
SHEET " B-3