

PROVIDENCE, R.I.  
CITY ENGINEER'S OFFICE  
STREET LINE DEPT.

May 23, 1911

037826

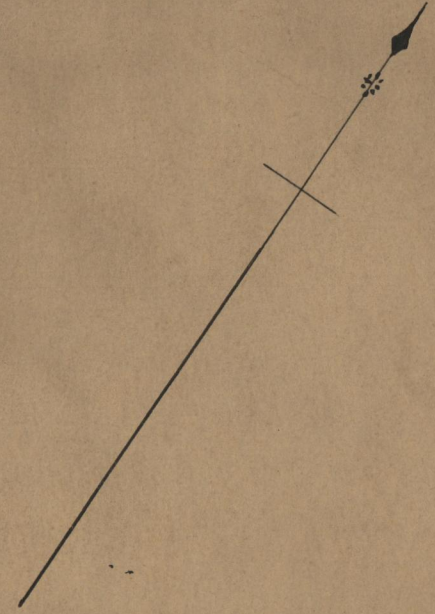
# PLAT OF CORINTH STREET

FROM BROAD ST. TO NIAGARA ST.

IN TWO SHEETS

SCALE 50 FEET PER INCH.

1220.82  
1222.18  
2244.00  
1221.50



ST.

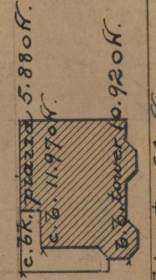
NIAGARA

round post 0.03 on C. St.

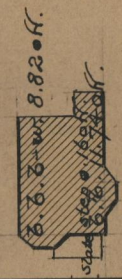
CB = 45.53  
45.0

Granite bound on line C. St.

old post 0.10 on.



old post 0.64 on.



round post 0.29 on.

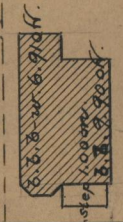


round post 0.05 on.

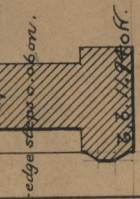


round iron post 0.08 on.

BA = 1220.82



c. post 0.84 on.  
c. concrete base 0.03 on.  
c. brick post 12.16 on.  
ridge of top 0.06 on.



b. 6. f. 0.04 on.



ST.

CORINTH STREET

CD = 1222.18

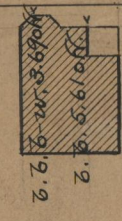
45.0

b. 6. f. 0.81 on.

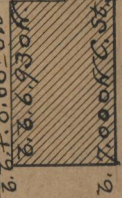


b. 6. f. 1.11 on.

round post 1.63 on



b. 6. f. 0.66 on.



b. 6. f. 0.55 on C. St.

SAVINGS

71  
B-2

OFFICE No. 18493  
DRAWER " 71  
SHEET " B-2