

PROVIDENCE, R.I.
CITY ENGINEER'S OFFICE
STREET LINE DEPT.

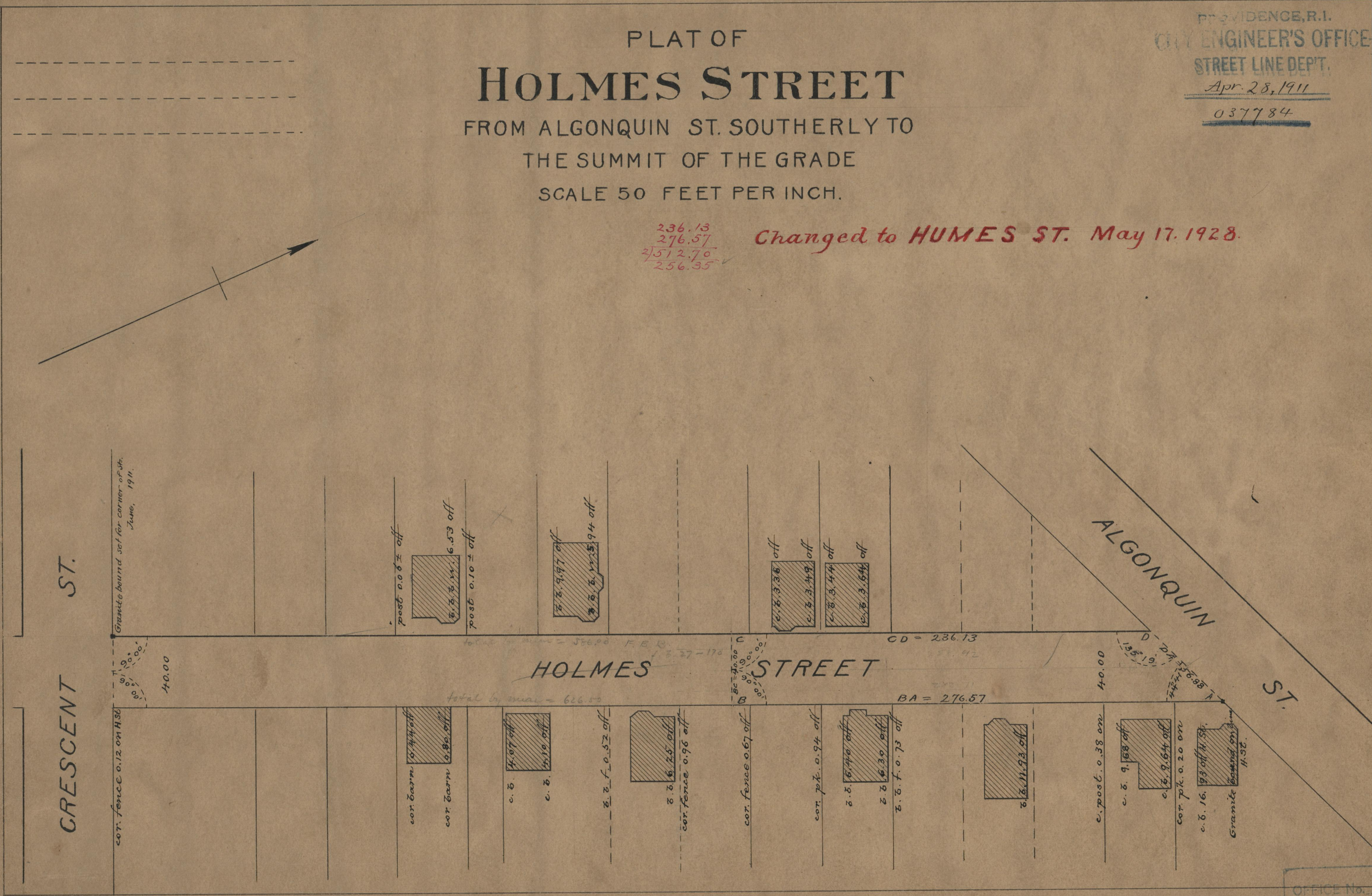
Apr. 28, 1911

037784

PLAT OF
HOLMES STREET
FROM ALGONQUIN ST. SOUTHERLY TO
THE SUMMIT OF THE GRADE
SCALE 50 FEET PER INCH.

236.13
276.57
2512.70
256.35

Changed to **HUMES ST.** May 17, 1928.



71
A-99

OFFICE No. 18480
DRAWER 71
A-99