

365 - 19 - 270
366 - 323

F.B.B. - 1490 - 155

PROVIDENCE, R.I.
CITY ENGINEER'S OFFICE

STREET LINE DEPT.

Dec. 31, 1910.

037611

Note, The limits of the area declared a public highway are indicated by the letters A B C and D.

The lines thus defined conform to the deeds recorded in Deed Book 365, pages 79 and 270, and Deed Book 366, page 323 in the office of the Recorder of Deeds.

PLAT OF

PRESIDENT AVENUE

FROM WESTERLY LINE OF COLE AVE. TO SLATER AVE.

SCALE 50 FEET PER INCH.

DECLARED A PUBLIC HIGHWAY

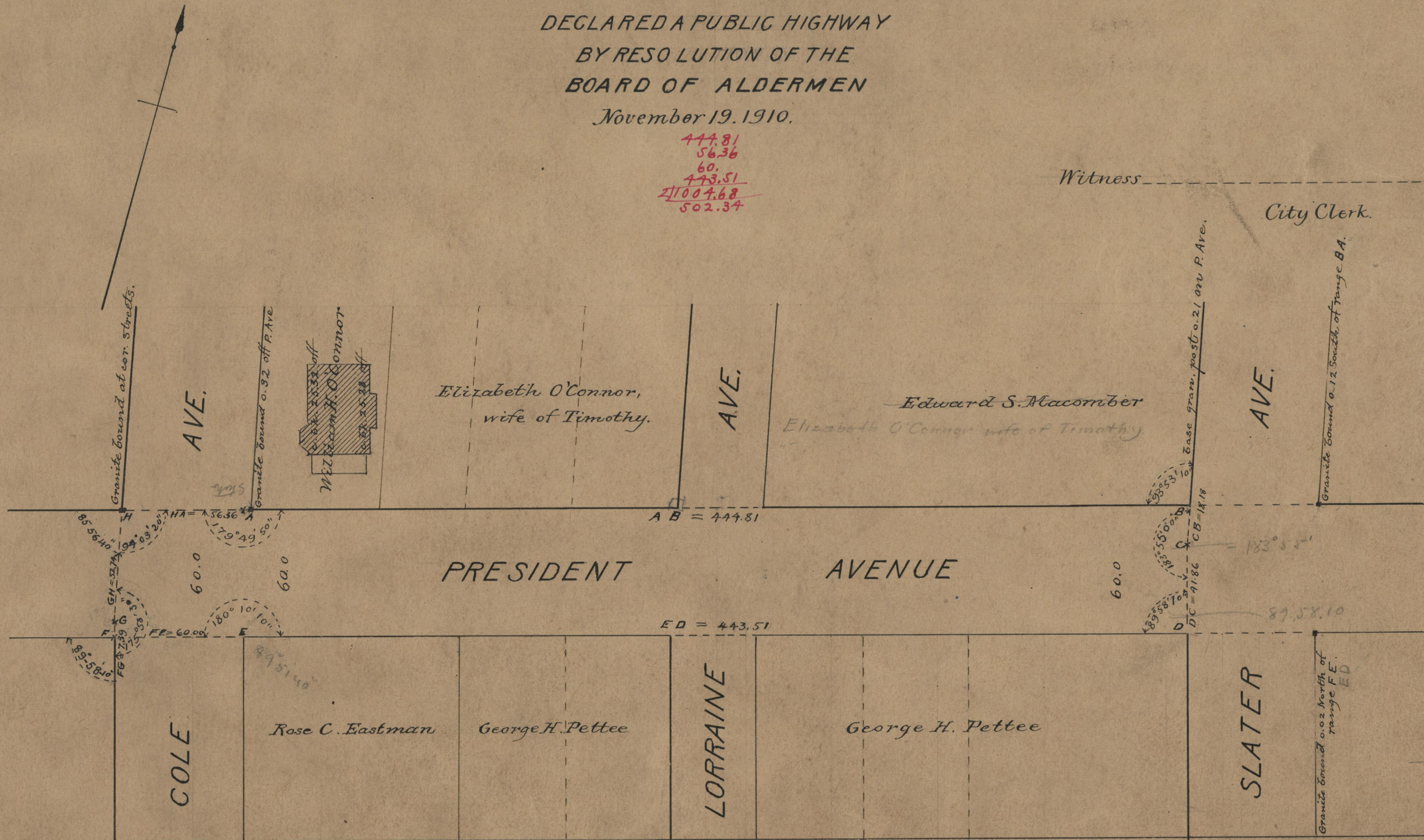
BY RESOLUTION OF THE
BOARD OF ALDERMEN

November 19, 1910.

444.81
56.36
60.
443.51
21004.68
502.34

Witness

City Clerk.



92.13.10
16.10
71.08.25

444.81
56.36
502.34

OFFICE No. 18407
DRAWER 71
A-95