

PROVIDENCE, R.I.
CITY ENGINEER'S OFFICE

STREET LINE DEPT.
Dec. 31, 1910.

037609

Note, The limits of the area declared a public highway are indicated by the letters ABCD.
The lines thus defined conform to the deeds recorded in Deed book 365, pages 79 and 270 in the office of the Recorder of Deeds

PLAT OF COLE AVENUE

FROM PRESIDENT AVE. TO LLOYD AVE.

SCALE 50 FEET PER INCH.

DECLARED A PUBLIC HIGHWAY

BY RESOLUTION OF THE

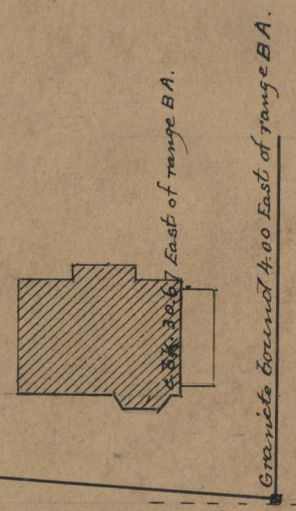
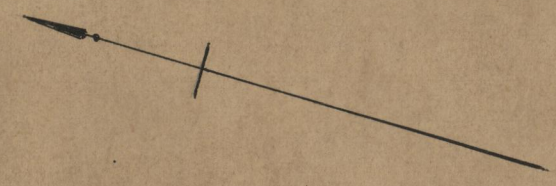
BOARD OF ALDERMEN

November 19, 1910.

403.64
403.53
2807.17
403.585
= 343.585*

Witness, _____

City Clerk



Granite bound 4.00 East of range BA.

PRESIDENT AVE.

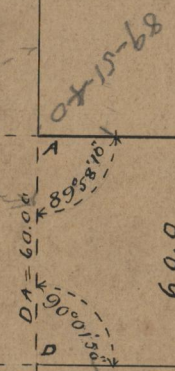
Rose C. Eastman

Elenora F. Eddy, wife of Forrest G.

60.0
AVE.

Granite bound on range AB.

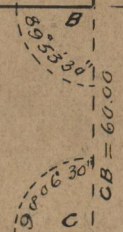
AB = 403.64 = 343.64*



60.0

COLE AVENUE

60.0



DC = 403.51 = 343.51*

Granite bound 3.70 East of range CD.

PRESIDENT AVE.

Weybosset Land Company

LLOYD AVE.

OFFICE No. 18406
DRAWER 7
SHEET A-90