

PROVIDENCE, R.I.
CITY ENGINEER'S OFFICE
STREET LINE DEPT.
Dec. 31, 1910.
037607

Note, The limits of the area declared a public highway are indicated by the letters ABCD.
The lines thus fixed conform to the deeds recorded in Deed Books 494 pages 368, 387 and 423, 497 page 15, 507 page 90, 508 page 438 and 512 page 34, in the office of the Recorder of Deeds.

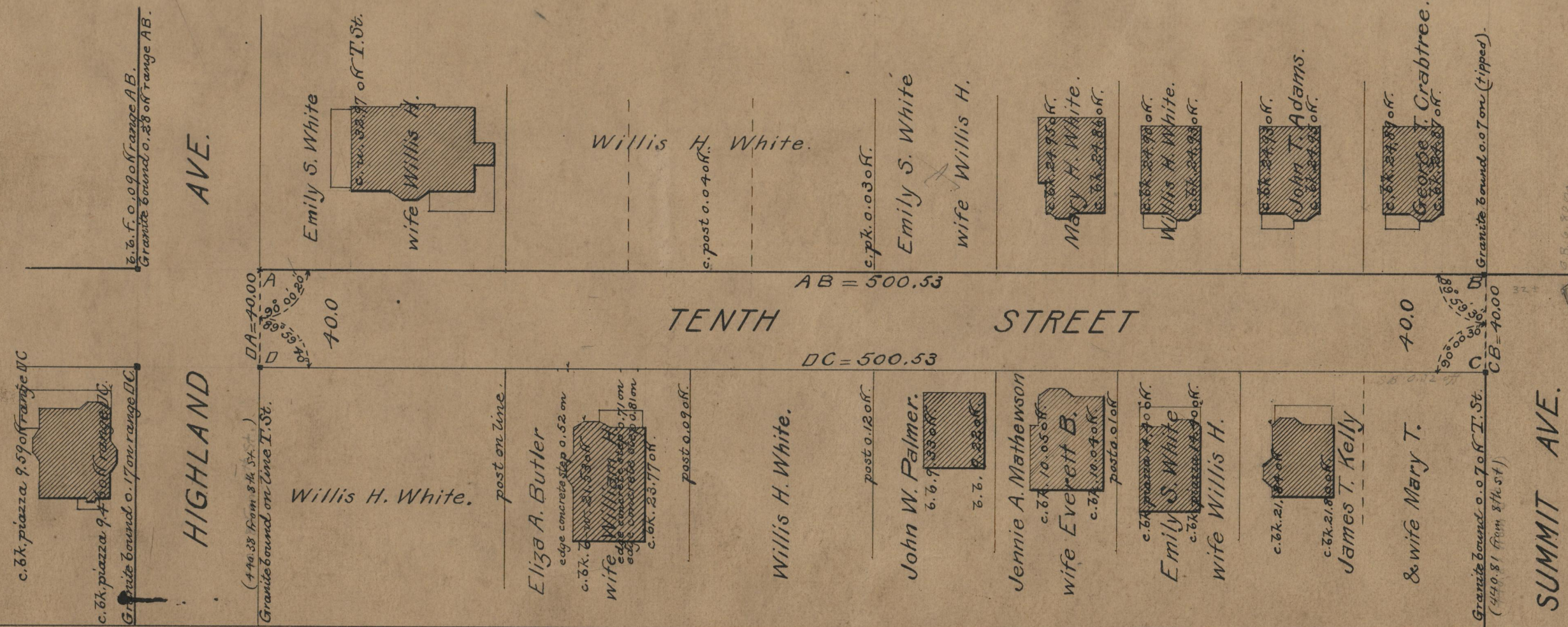
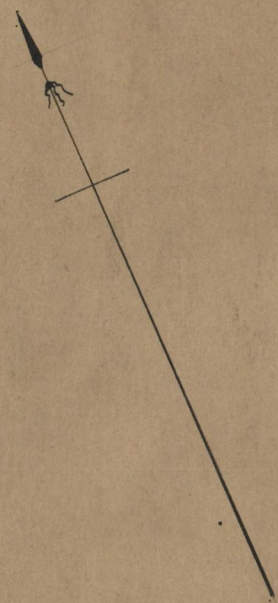
PLAT OF TENTH STREET

FROM HIGHLAND AVE. TO SUMMIT AVE.

SCALE 50 FEET PER INCH.

DECLARED A PUBLIC HIGHWAY
BY RESOLUTION OF THE
BOARD OF ALDERMEN
December 15, 1910.

Witness, _____
City Clerk.



OFFICE No. 18405
DRAWN 71
A-93