

PROVIDENCE, R.I.  
CITY ENGINEER'S OFFICE  
STREET LINE DEPT.

Oct. 31, 1910

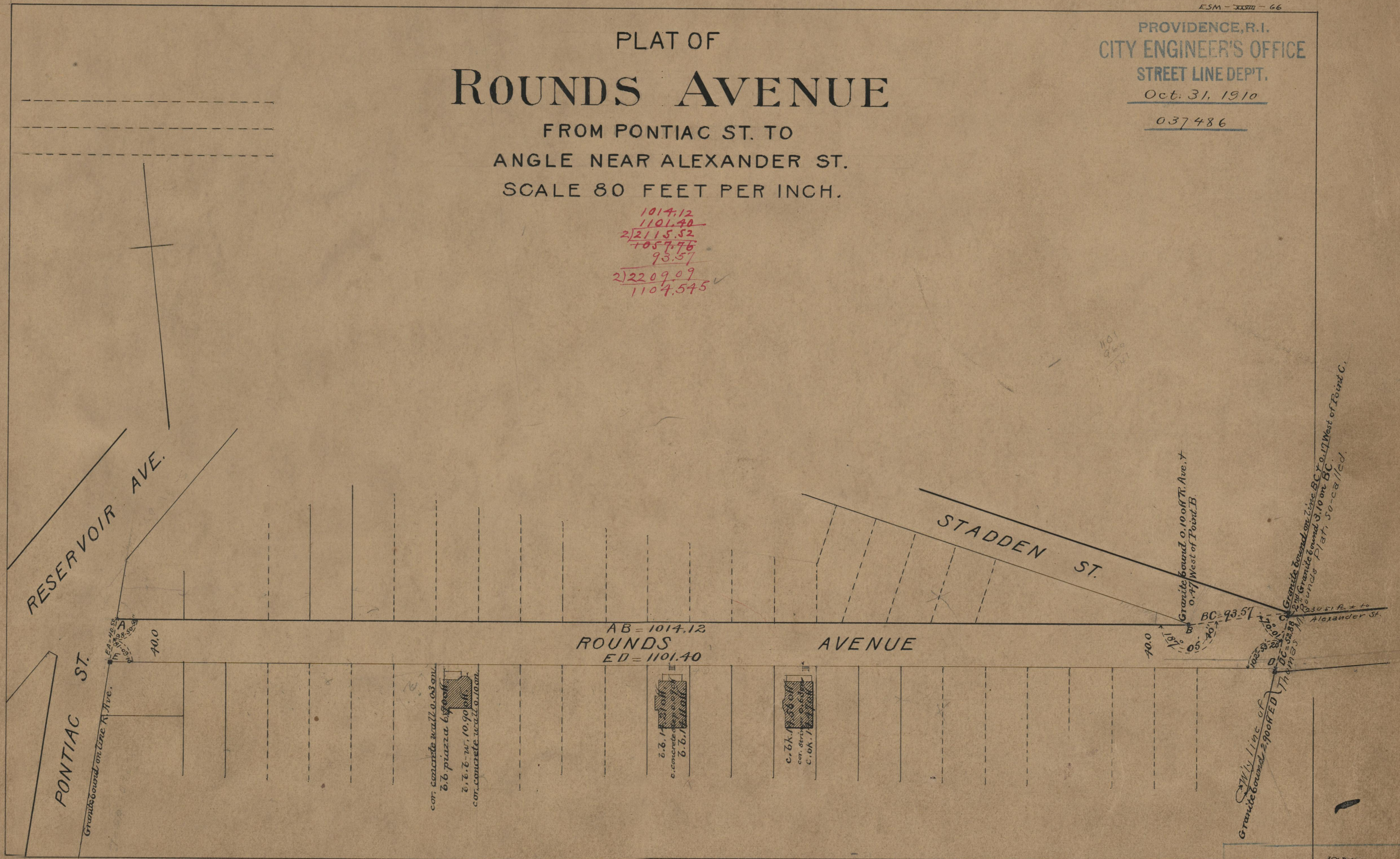
037486

# PLAT OF ROUNDS AVENUE

FROM PONTIAC ST. TO  
ANGLE NEAR ALEXANDER ST.

SCALE 80 FEET PER INCH.

1014.12  
1101.40  
2)2115.52  
1057.76  
93.57  
2)2209.09  
1104.545 ✓



Granite bound 0.10 off R. Ave. +  
0.47 West of Point B

Granite bound on Line BC +  
0.17 West of Point C.  
Granite bound 3.10 on BC.  
Grounds Plat. 50-called.

Granite bound 2,900 feet  
Thomson

OFFICE No. 18360  
DRAWN 71  
A-86