

PROVIDENCE, R.I.
CITY ENGINEER'S OFFICE
STREET LINE DEPT.
Oct. 6, 1910.

037428

PLAT OF FIFIELD AVENUE

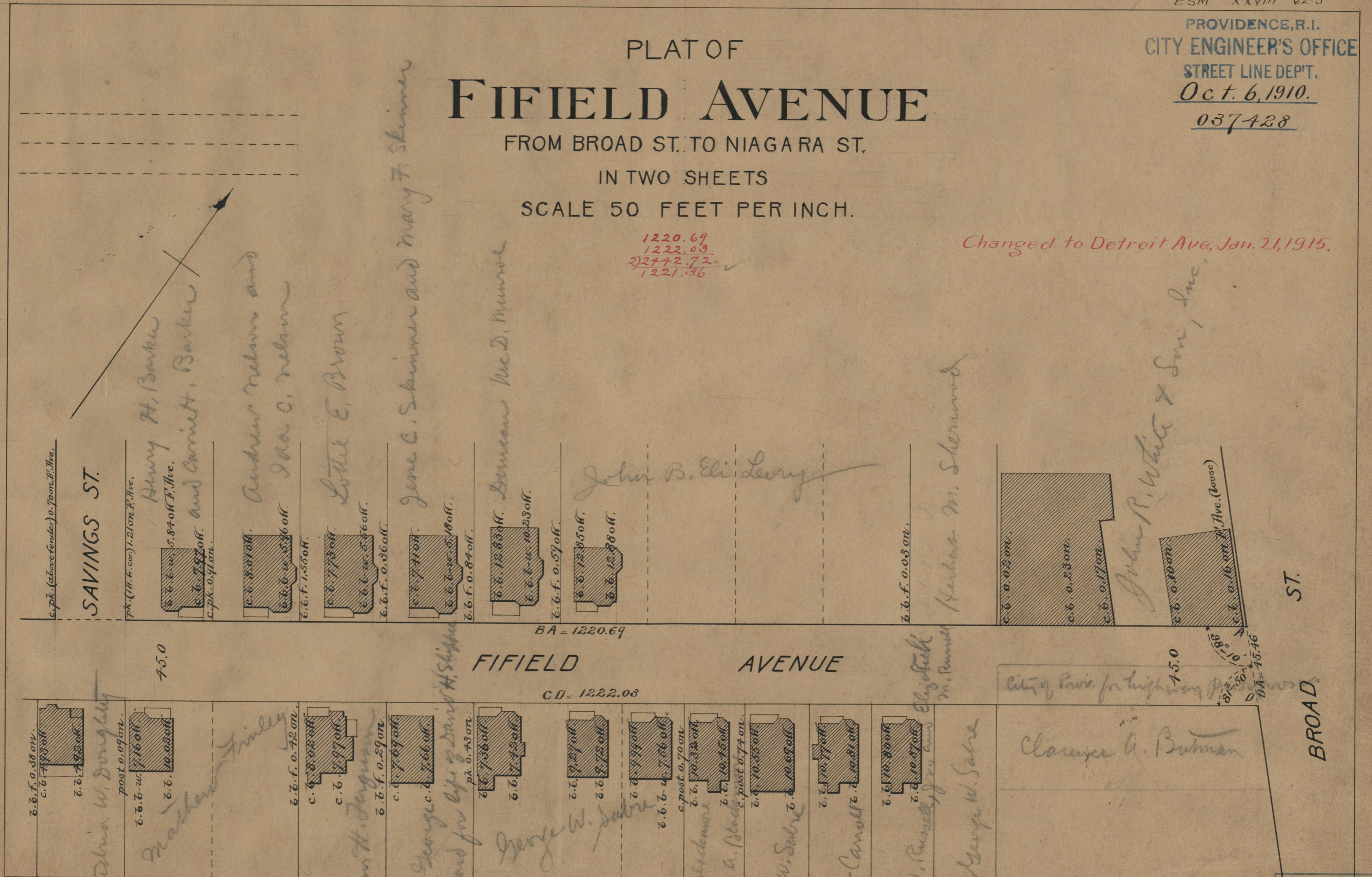
FROM BROAD ST. TO NIAGARA ST.

IN TWO SHEETS

SCALE 50 FEET PER INCH.

Changed to Detroit Ave., Jan. 21, 1915.

1220.69
1222.03
2242.72
1221.36



ST.
BROAD

OFFICE No. 18344
DRAWER " 71
SHEET " A-83