

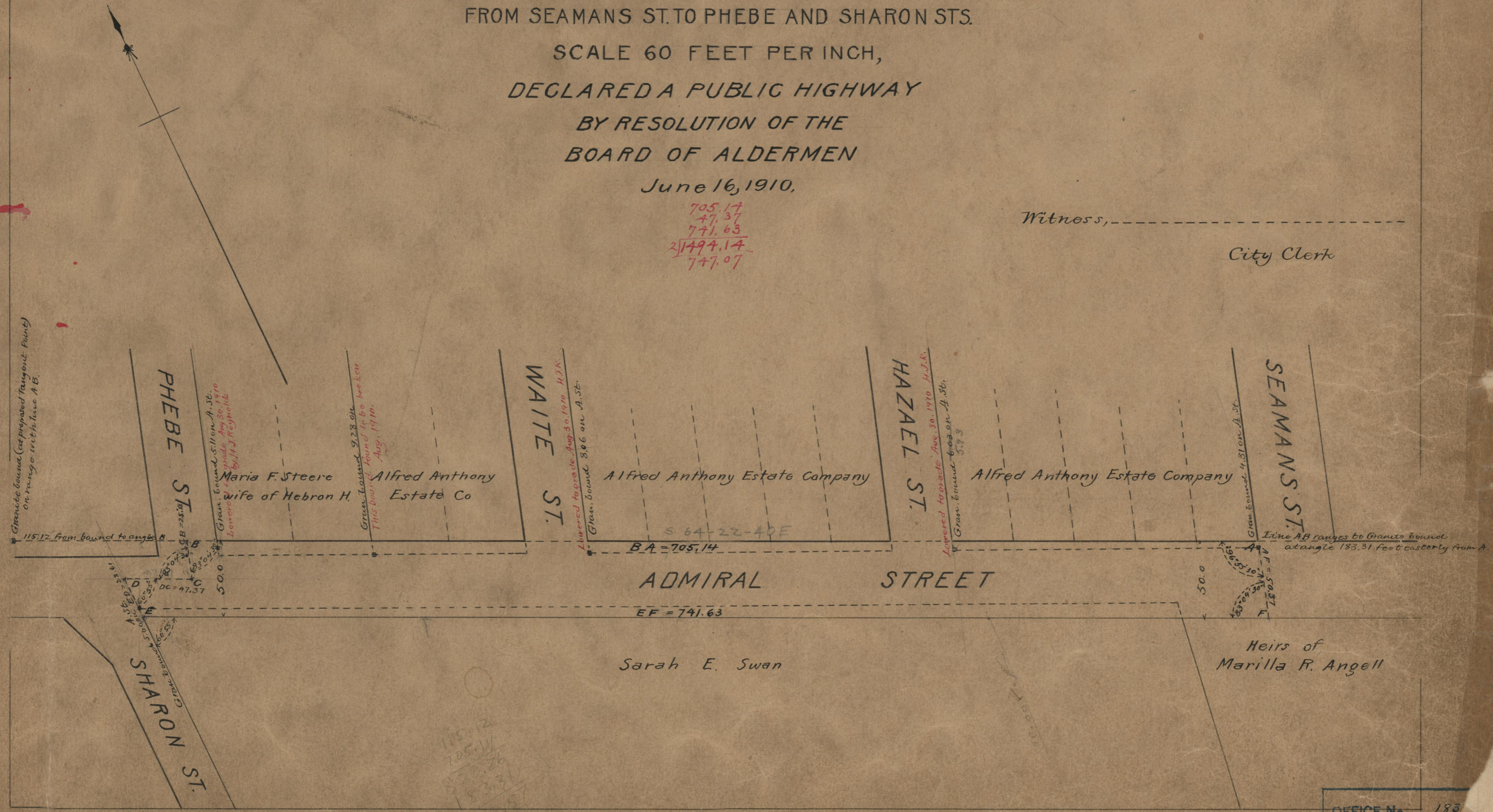
July 29, 1910  
037320

Note. The area declared a public highway is defined by the letters A B C D E F.  
The lines thus fixed conform to the deeds recorded in Deed Book 507 at pages 379, 380, 381 and 382, in the Office of the Recorder of Deeds.

PLAT OF  
**ADMIRAL STREET**  
FROM SEAMANS ST. TO PHEBE AND SHARON STS.  
SCALE 60 FEET PER INCH,  
DECLARED A PUBLIC HIGHWAY  
BY RESOLUTION OF THE  
BOARD OF ALDERMEN  
June 16, 1910.

705.14  
47.37  
741.63  
21494.14  
747.07

Witness, \_\_\_\_\_  
City Clerk



115.12  
705.14  
870.26  
183.31  
170.57

71  
A-81

OFFICE No. 185  
DRAWER " 71  
SHEET " A