

PLAT OF

PEMBERTON STREET

FROM BEAUFORT ST. TO ROANOKE ST.

SCALE 50 FEET PER INCH.

DECLARED A PUBLIC HIGHWAY

BY RESOLUTION OF THE

BOARD OF ALDERMEN,

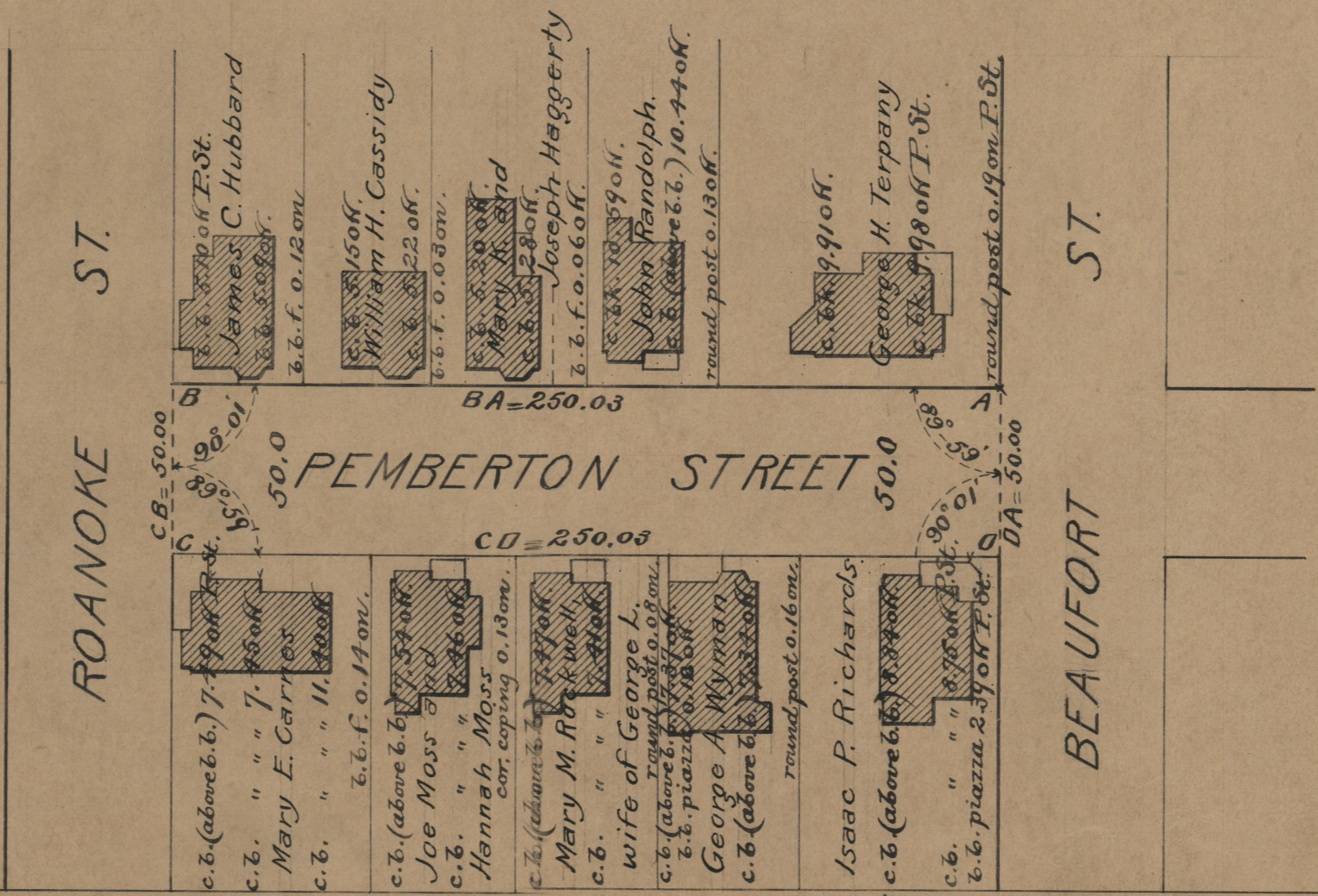
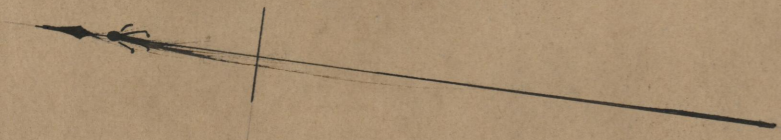
June 16, 1910.

250.03

Witness, -----

City Clerk, -----

Note, The area declared a public highway is defined by the letters ABCD.
The lines thus fixed conform to the deeds recorded in Deed Books 376, page 97, 379, page 20, 502, page 173, 508, pages 355, and 380, 511, page 246, 512, pages 207, 209, 210 and 257, in the Office of the Recorder of Deeds.



71-A 79

OFFICE No. 18301
DRAWER " 71
SHEET " A-79