

460-44

E.S.M. XXVIII - 47

PROVIDENCE, R.I.
CITY ENGINEER'S OFFICE
STREET LINE DEPT.
July 8, 1910.
037279

Note The area declared a public highway
is defined by the letters A B C and D
The lines thus fixed conform to the
deed recorded in Deed Book 460, page
44 in the office of the Recorder of Deeds.

PLAT OF FISHER STREET

FROM HOPE ST. TO MORRIS AVE.

SCALE 50 FEET PER INCH.

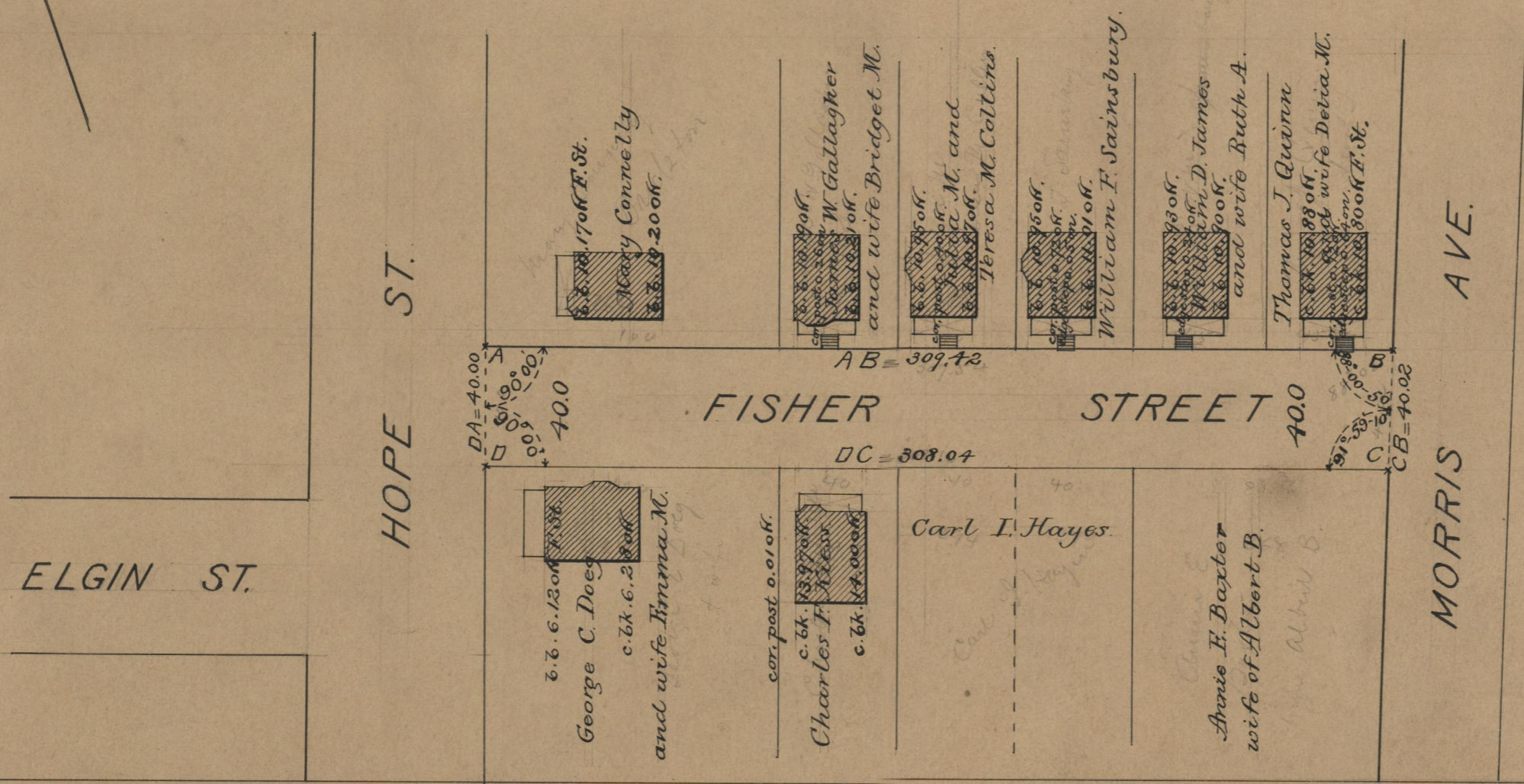
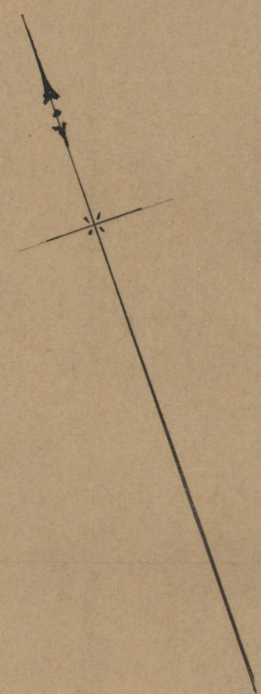
DECLARED A PUBLIC HIGHWAY
BY RESOLUTION OF THE
BOARD OF ALDERMEN

April 21, 1910.

309.42
308.04
2) 617.46
308.73

Witness, -----

City Clerk.



OFFICE No. 18309
DRAWER " 71
SHEET " A-75