

PROVIDENCE, R.I.
CITY ENGINEER'S OFFICE
STREET LINE DEPT.
June 18, 1910

137238

PLAT OF BEULAH STREET

FROM VEAZIE ST. TO WOODWARD ROAD.

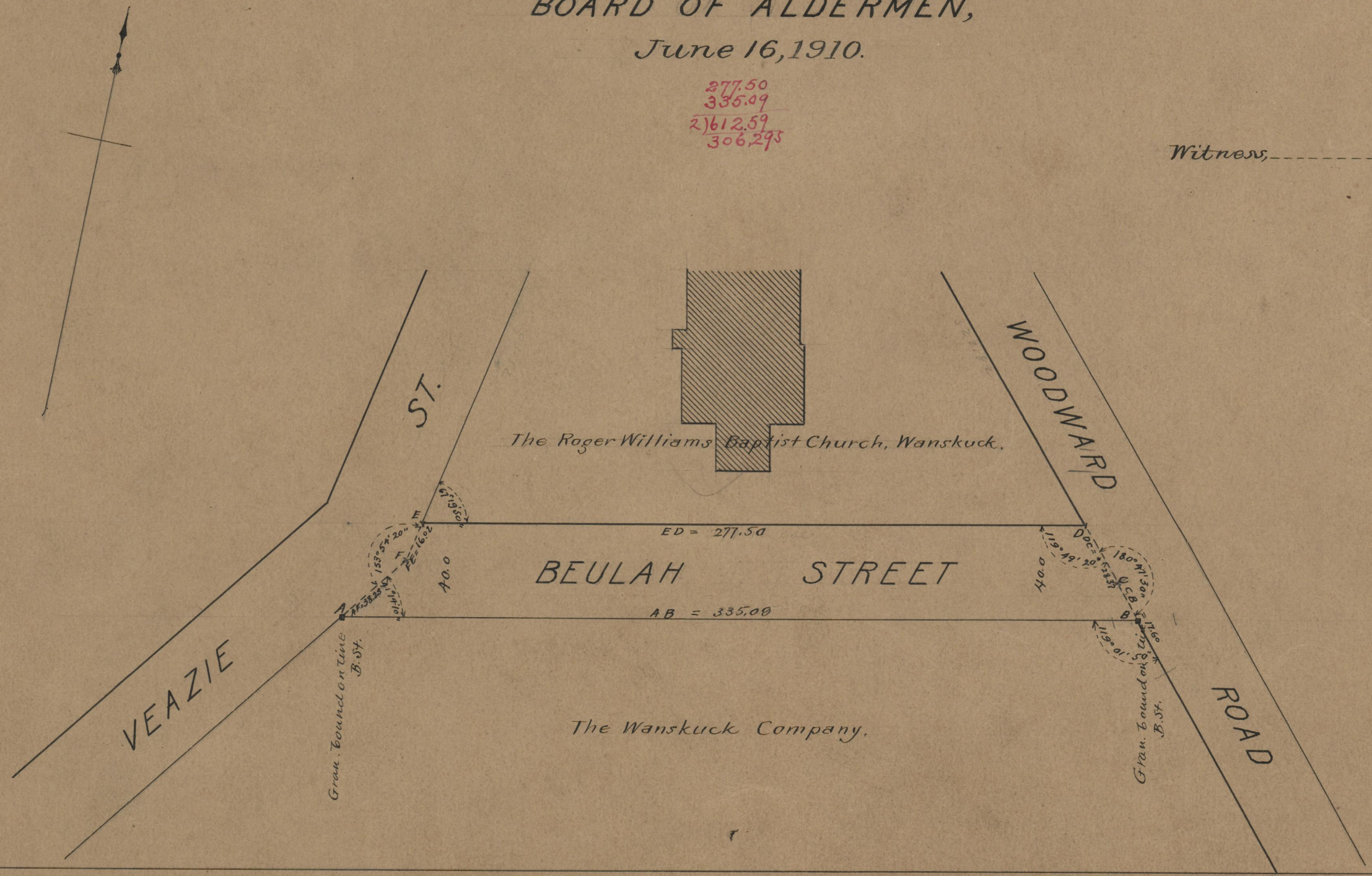
SCALE 50 FEET PER INCH.

DECLARED A PUBLIC HIGHWAY
BY RESOLUTION OF THE
BOARD OF ALDERMEN,
June 16, 1910.

277.50
335.09
27612.59
306.293

Witness, _____
City Clerk.

Note, The area declared a public highway
is indicated by the letters A B C D E F.
The lines thus fixed conform to the
deed recorded in Deed Book 506, page 466
in the office of the Recorder of Deeds.



71
A-73

OFFICE No.	18307
DRAWER "	71
SHEET "	A-73