

48-13

ESM-XXVII-41

PROVIDENCE, R.I.  
CITY ENGINEER'S OFFICE  
STREET LINE DEPT.  
June 1, 1910.  
037183

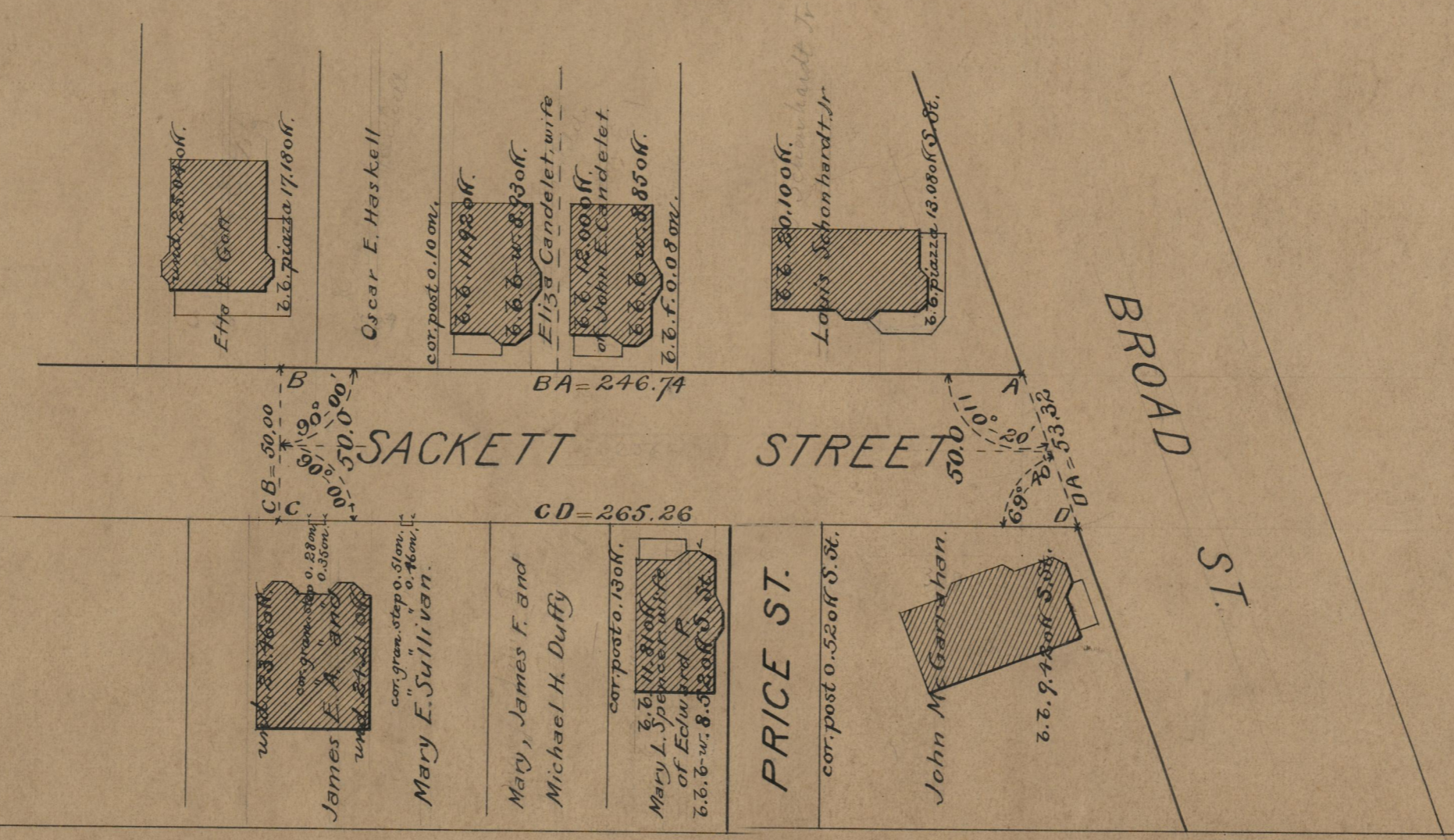
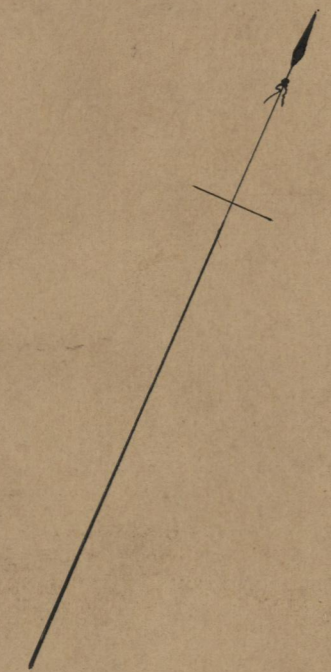
Note, The limits of the area declared a public highway are indicated by the letters A B C D.  
The lines thus fixed conform to the deed recorded in Deed Book 211, page 442, in the office of the Recorder of Deeds.

PLAT OF  
**SACKETT STREET**  
FROM BROAD ST. WESTERLY 256 FEET.  
SCALE 50 FEET PER INCH.

DECLARED A PUBLIC HIGHWAY  
BY RESOLUTION OF THE  
BOARD OF ALDERMEN,  
April 21, 1910.

246.74  
255.26  
2512.00  
256.00

Witness, \_\_\_\_\_  
City Clerk.



OFFICE No. 18280  
DRAWER " 71  
SHEET " A-72