

48-13

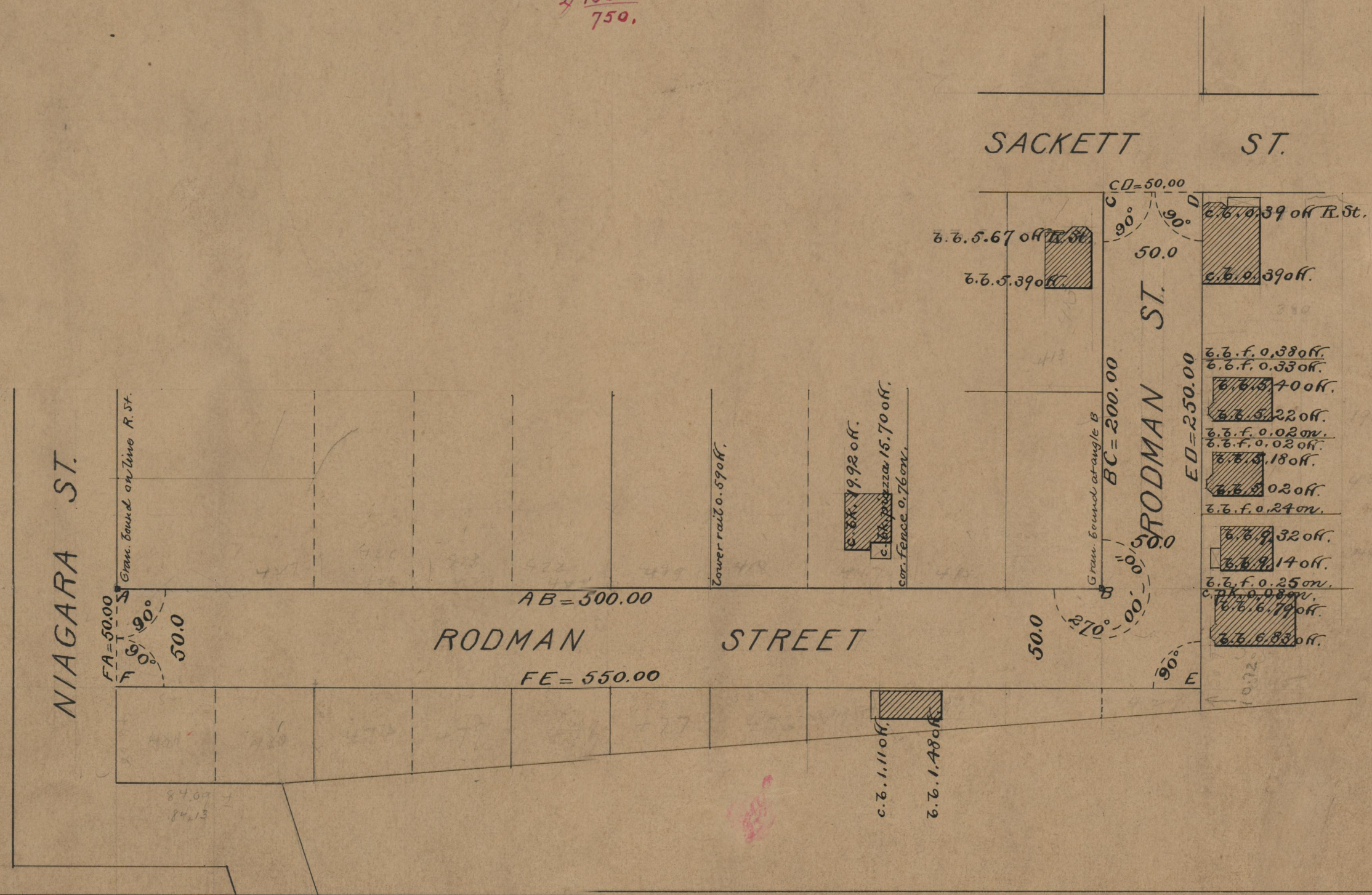
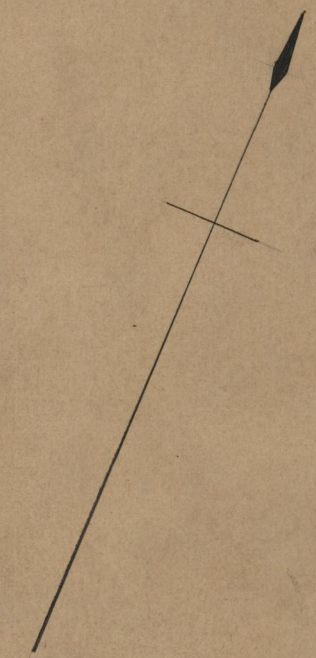
ESM-XXVIII-40

PLAT OF
RODMAN STREET
 FROM NIAGARA ST. TO SACKETT ST.
 SCALE 60 FEET PER INCH.

PROVIDED BY
 CITY ENGINEER'S OFFICE
 STREET LINE DEPT.
 May 31, 1910.
037180

500
 200
 350
 250
 2) 1500
 750.

*Rodman St. from Sackett St. to angle
 changed to Emerson St. Feb. 4, 1915.*



OFFICE No. 18279
 DRAWER 71
 SHEET P-71