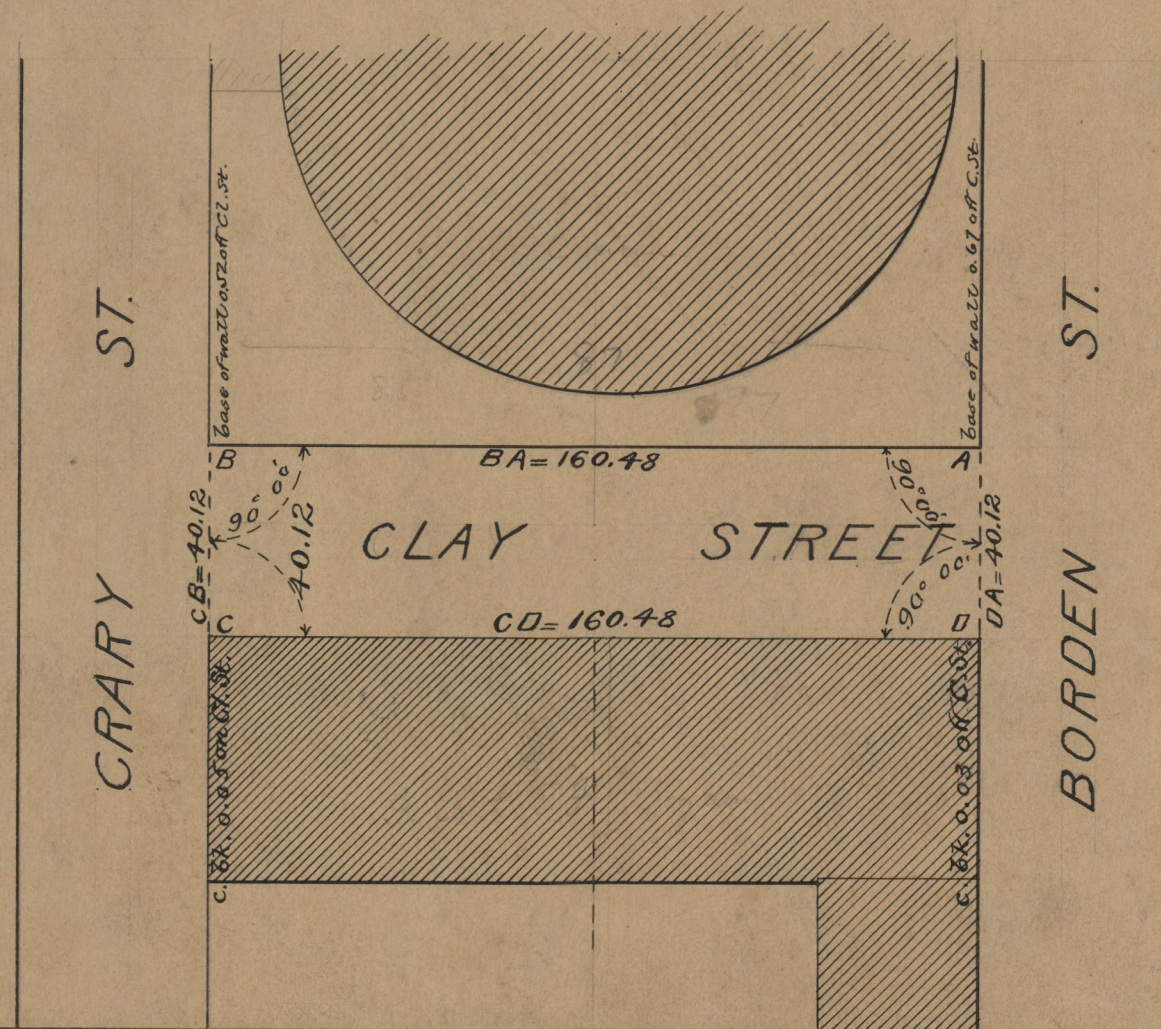
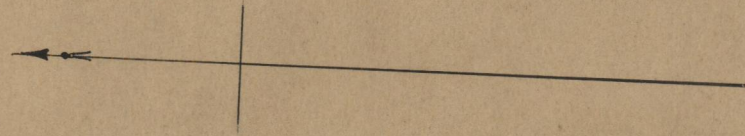


PROVIDENCE, R.I.  
CITY ENGINEER'S OFFICE  
STREET LINE DEPT.  
May 27, 1910.  
037178

PLAT OF  
**CLAY STREET**  
FROM BORDEN ST. TO CRARY ST.  
SCALE 40 FEET PER INCH.

160.48



|            |       |
|------------|-------|
| OFFICE No. | 18278 |
| DRAWER     | 71    |
| SHEET      | A-70  |