

50 17  
51 17

Mar 17, 1910

F.B.B XXX 149

PROVIDENCE, R.I.  
CITY ENGINEER'S OFFICE  
STREET LINE DEPT.

Apr 4, 1910

0370766

Note, The area declared a public highway is indicated by the letters A B C D.

The lines thus fixed conform to the deeds recorded in Deed Book 387, page 369, and Deed Book 511, pages 139 and 140, in the office of the Recorder of Deds.

# PLAT OF WOODMAN STREET

FROM ELMWOOD AVE. TO BUCKLIN ST.

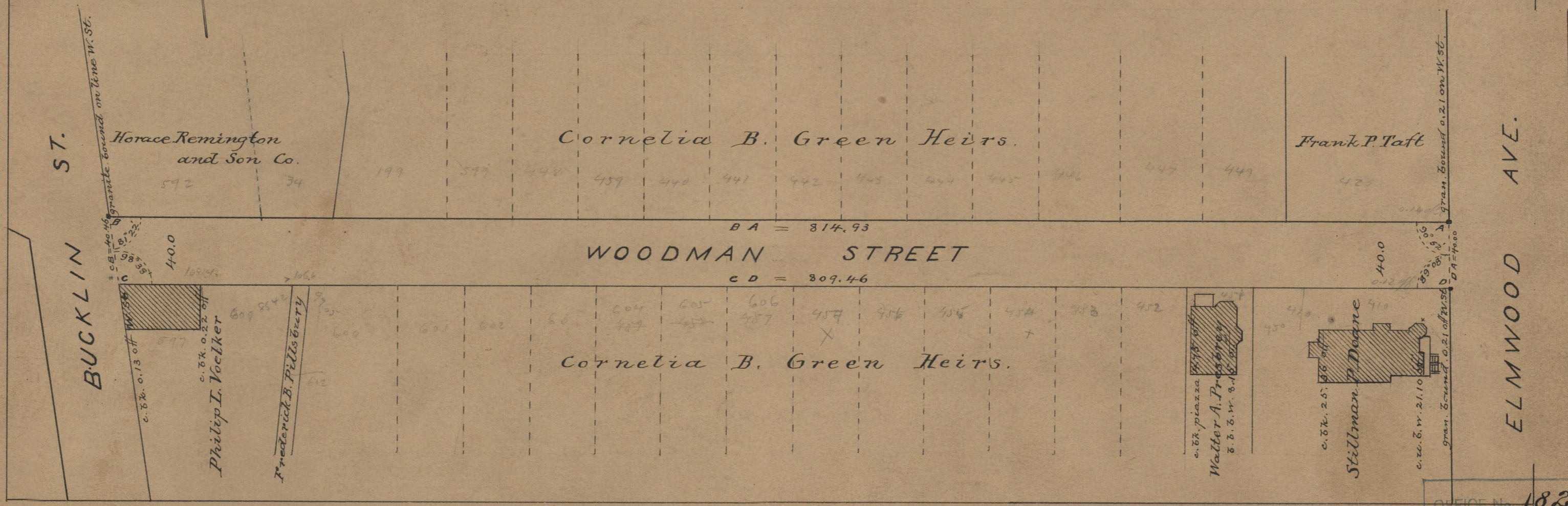
SCALE 60 FEET PER INCH.

DECLARED A PUBLIC HIGHWAY  
BY RESOLUTION OF THE  
BOARD OF ALDERMEN

March 17, 1910.

814.93  
809.46  
2)1624.39  
812.195

Witness, \_\_\_\_\_  
City Clerk.



OFFICE No. 18267  
DRAWER " 71  
SHEET " A-69