

PROVIDENCE, R.I.
CITY ENGINEER'S OFFICE
STREET LINE DEPT.
Nov. 26, 1909.
036660

PLAT OF LAURISTON STREET FROM HOPE ST. TO WESTERLY LINE OF BREWSTER ST.

SCALE 50 FEET PER INCH.

Note, The area established a public highway is indicated by the letters A B C D.
The lines thus fixed conform to the "Map of Land in Providence belonging to Wm. H. Richmond," a recorded plat on which Lauriston Street was originally platted.

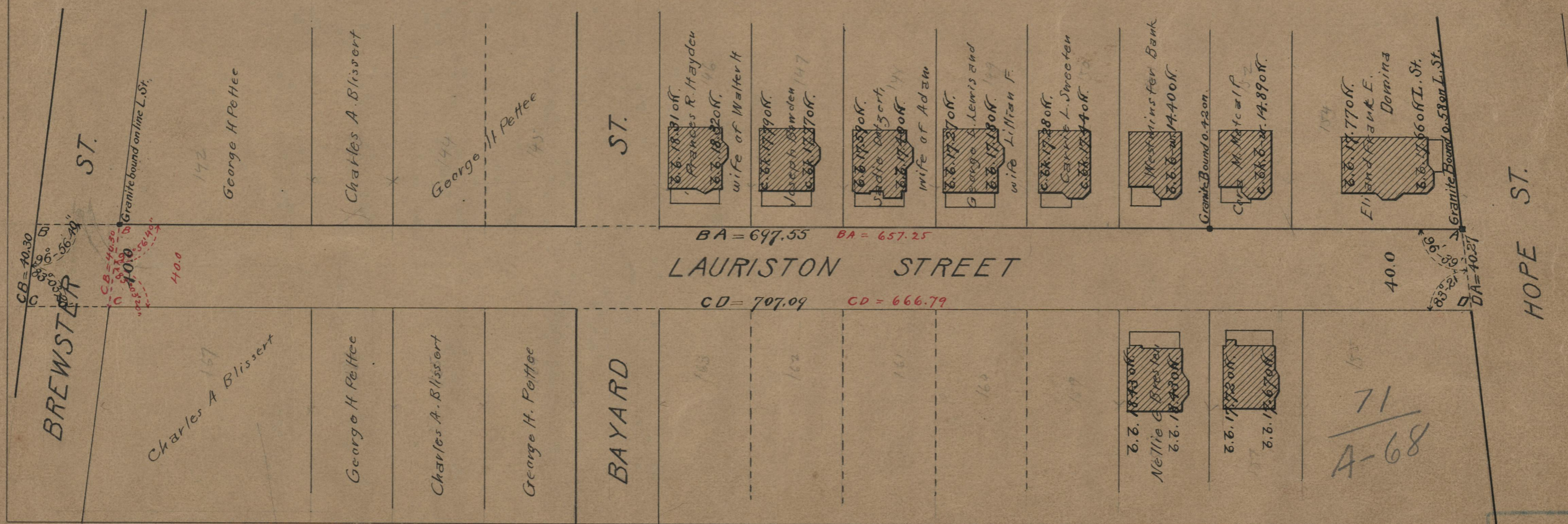
697.55
707.09
217.54
702.52

657.25
666.79
213.24
662.02*

ESTABLISHED A PUBLIC HIGHWAY BY THE
BOARD OF ALDERMEN
UPON PETITION OF ABUTTING OWNERS
March 17, 1910.

Note, The red figures on the plan agree with plan accompanying resolution of establishment, Mar 17, 1910.

Witness, _____
City Clerk.



71
A-68

OFFICE No. 18104
DRAWER " 71
SHEET " A-68