

PROVIDENCE, R.I.  
CITY ENGINEER'S OFFICE  
STREET LINE DEPT.

Sept. 25, 1909

636566

Note, The limits of the area declared a public highway are indicated by the letters ABCD.  
The lines thus fixed conform to the deeds recorded in Deed Book 470, pages 486 and 487, and Deed Book 473, page 330, in the office of the Recorder of Deeds.

# PLAT OF HART STREET

FROM HOPE ST. TO IVY ST.

SCALE 50 FEET PER INCH.

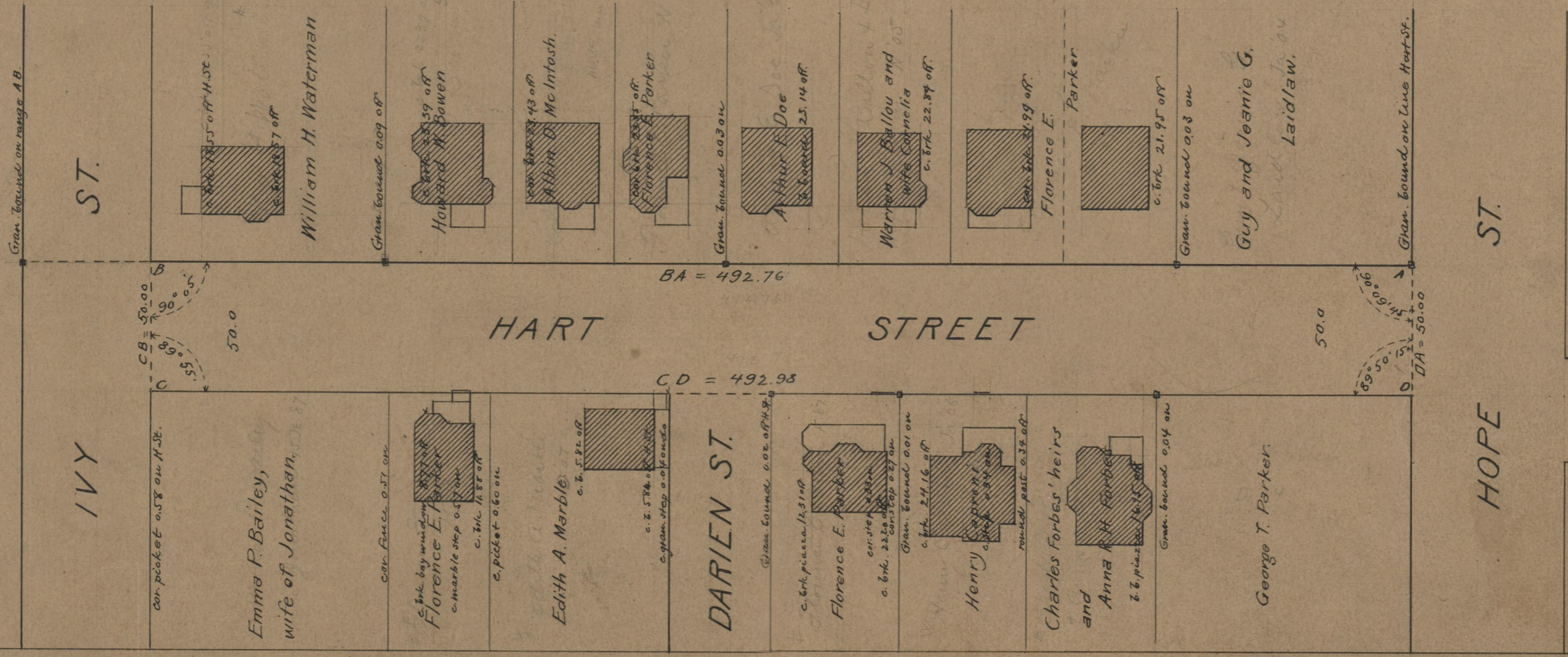
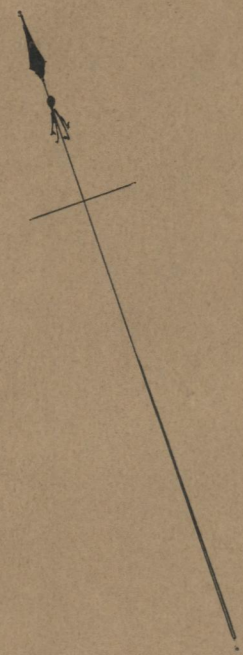
DECLARED A PUBLIC HIGHWAY  
BY RESOLUTION OF THE  
BOARD OF ALDERMEN

September 16, 1909.

792.98  
792.76  
21985.74  
792.87

Witness, -----

City Clerk.



71  
A-64

OFFICE No. 18096  
DRAWER " 71  
SHEET " A-64